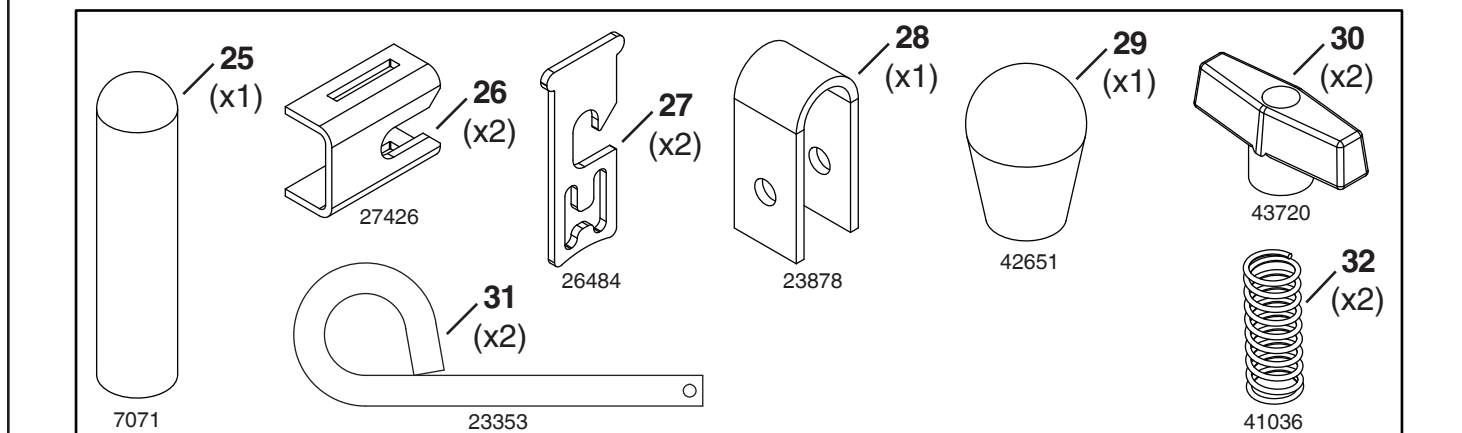
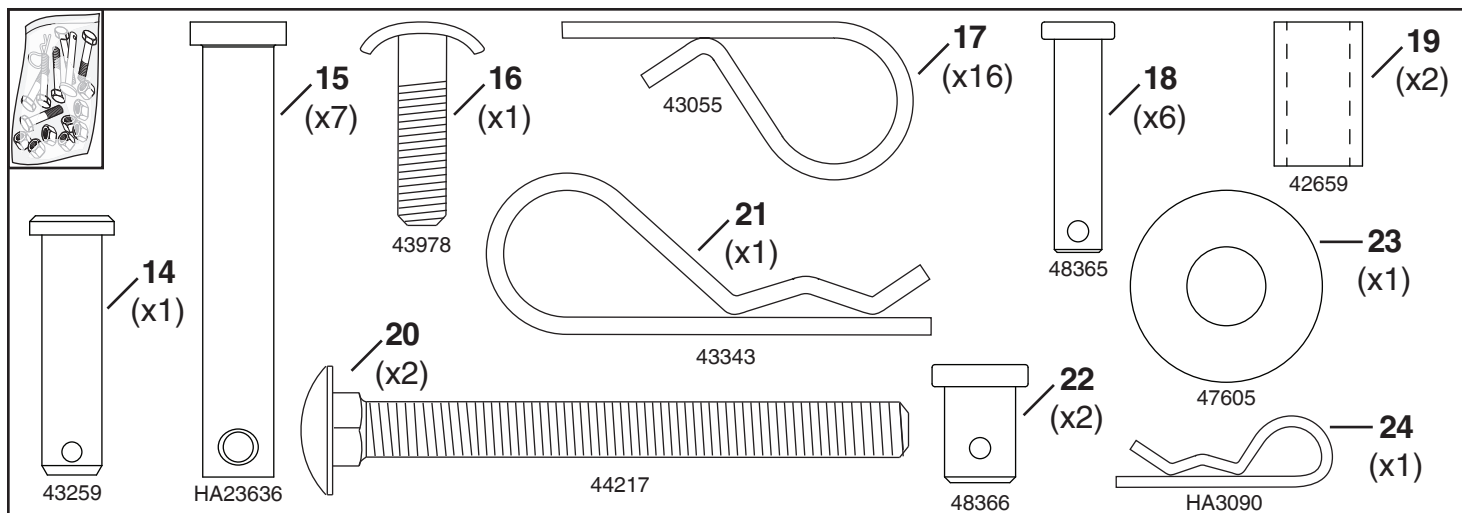
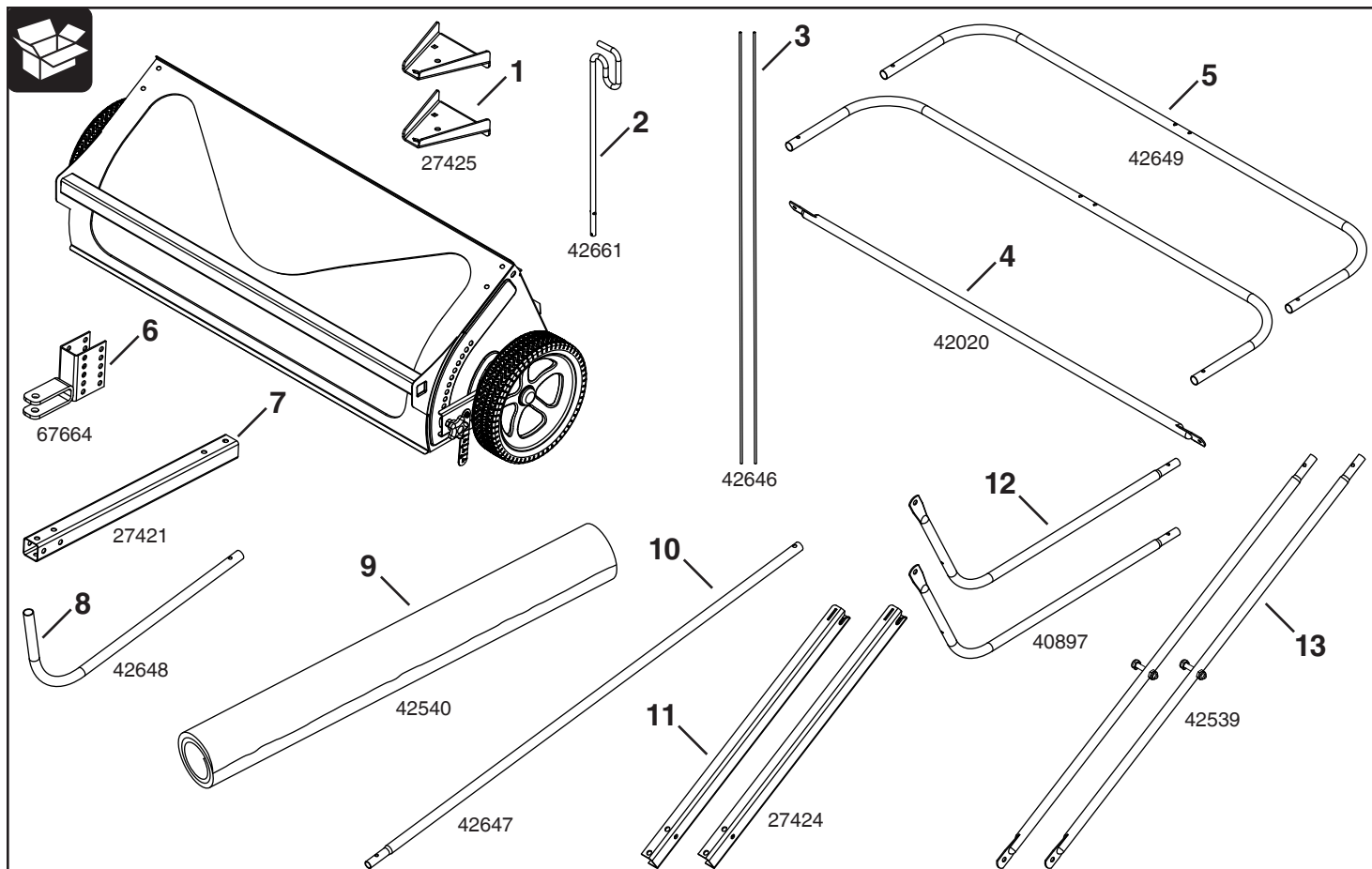
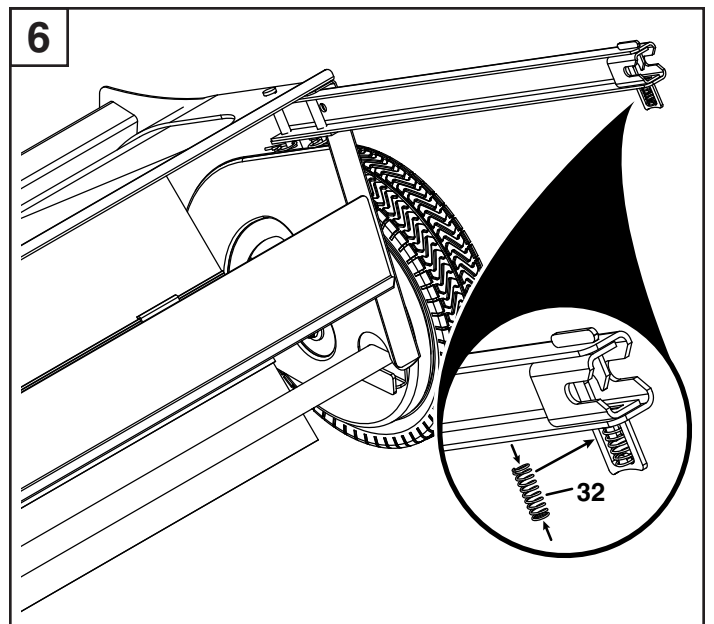
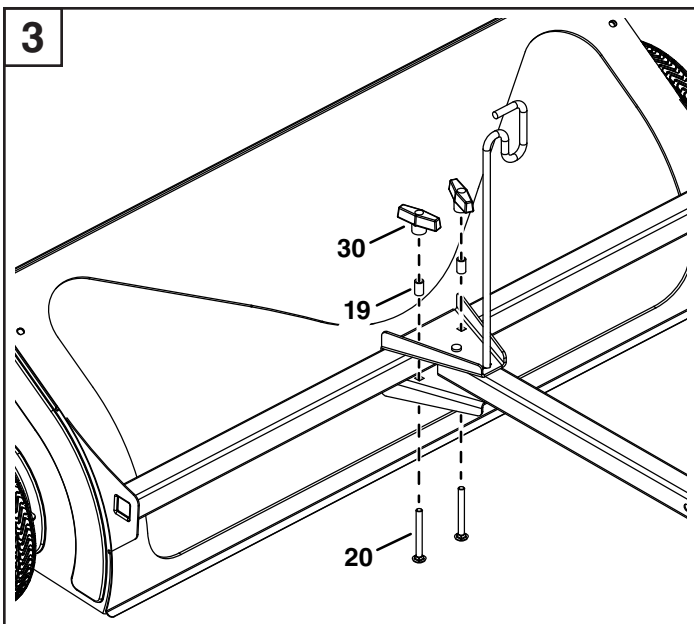
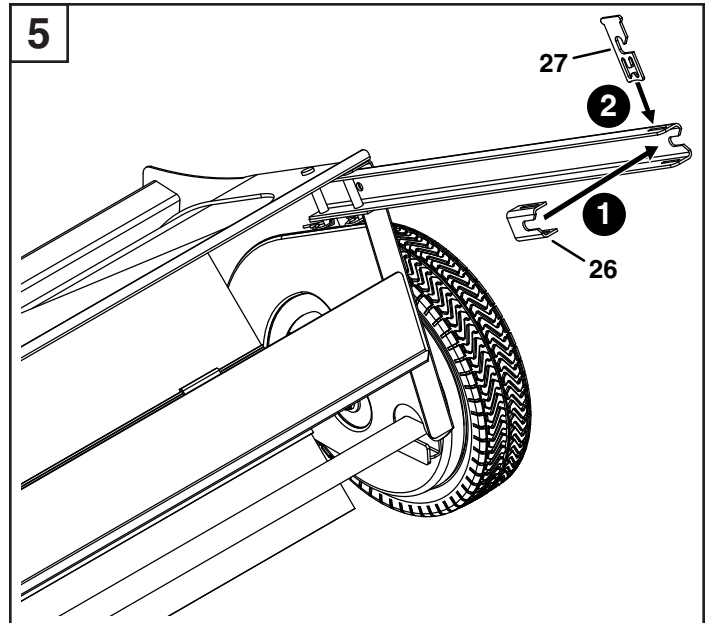
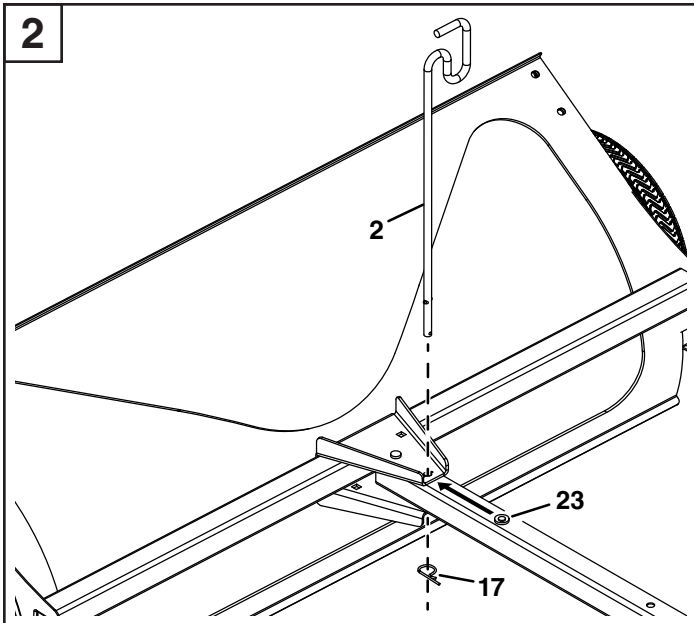
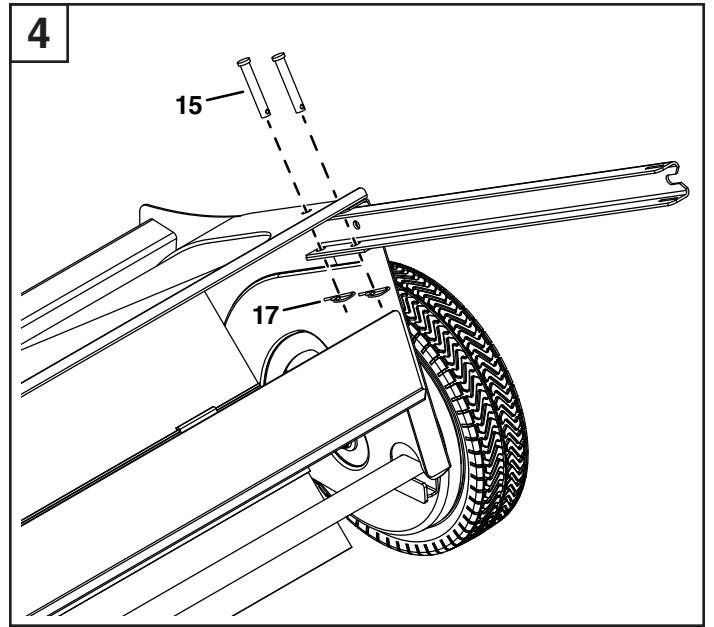
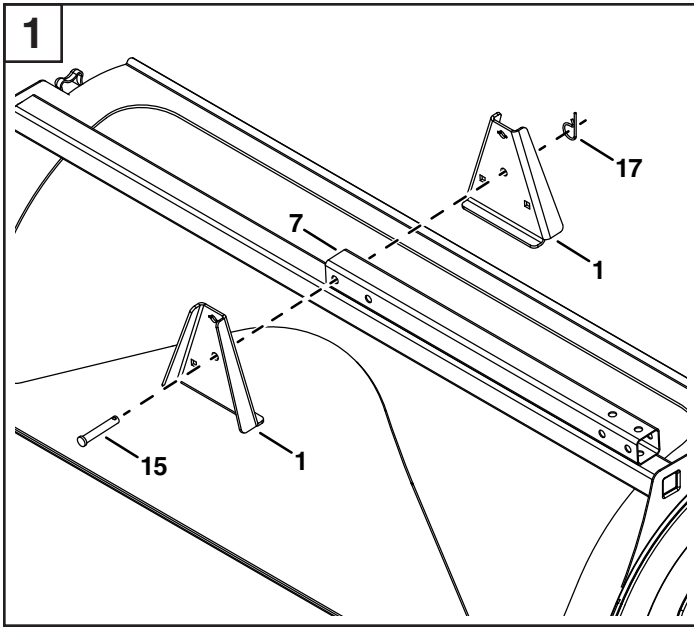
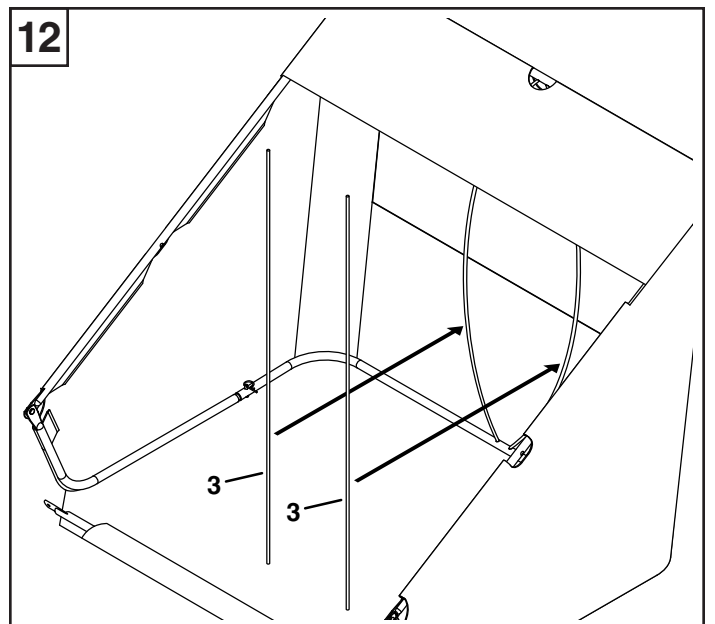
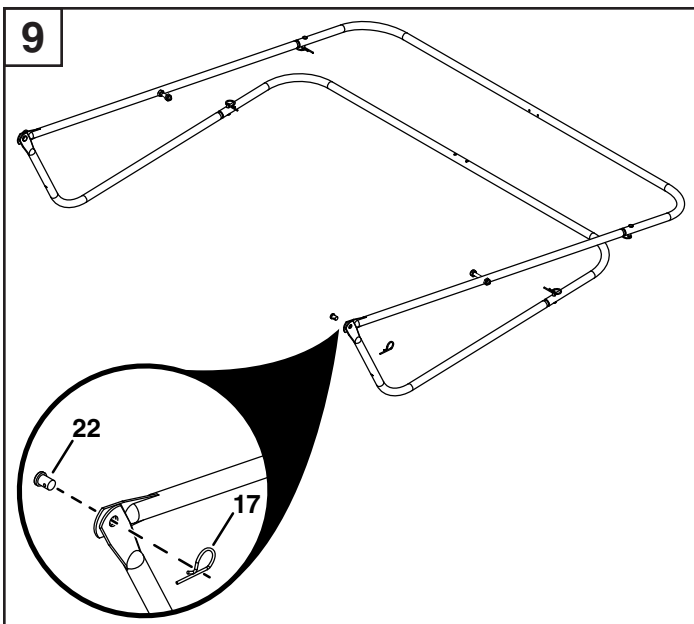
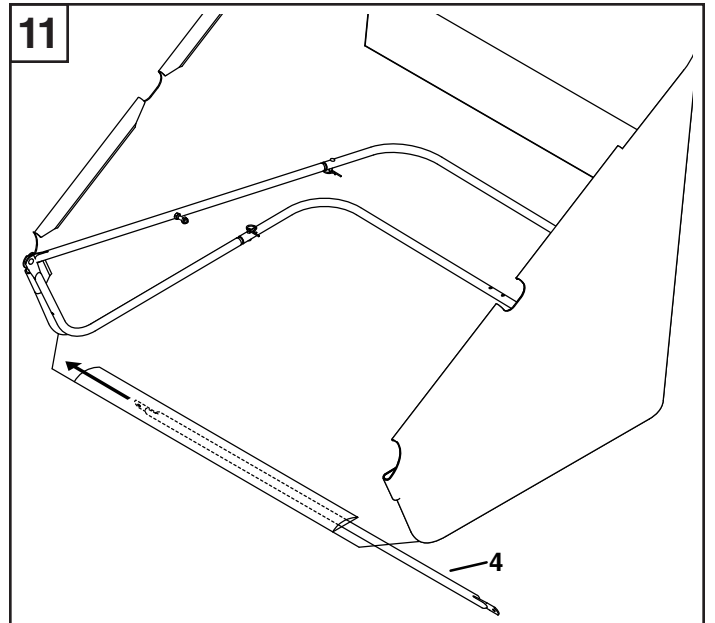
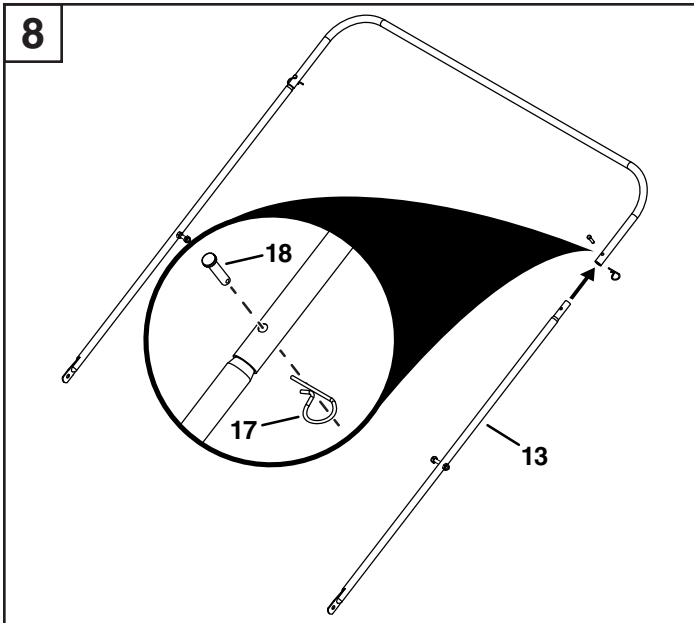
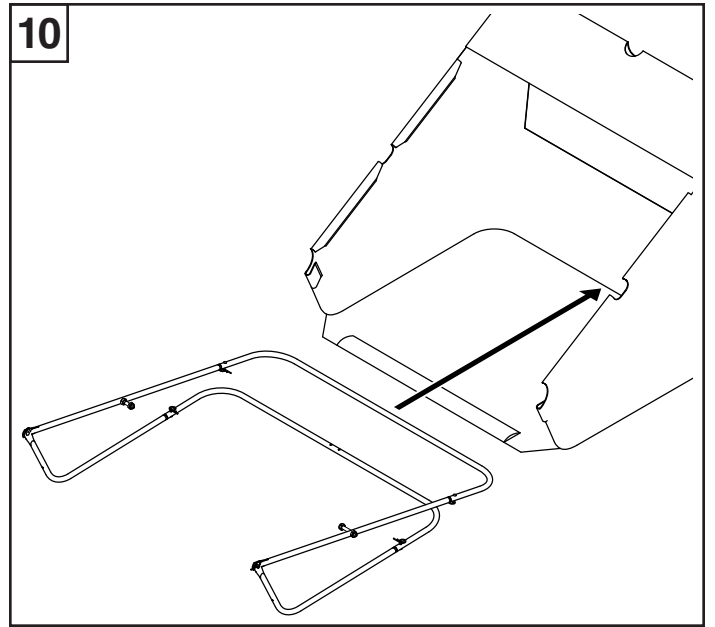
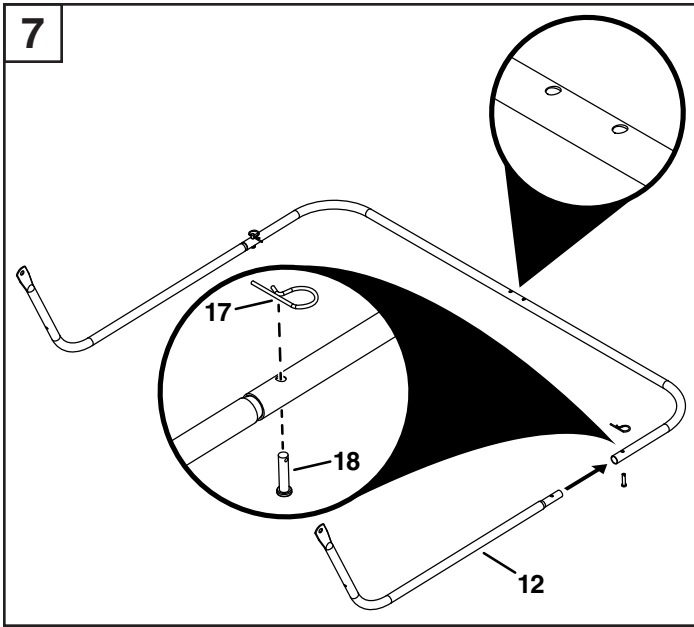
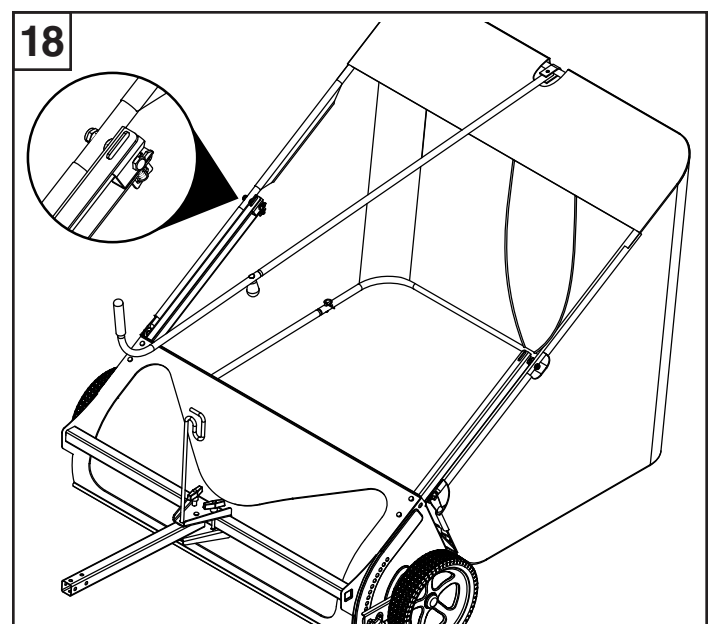
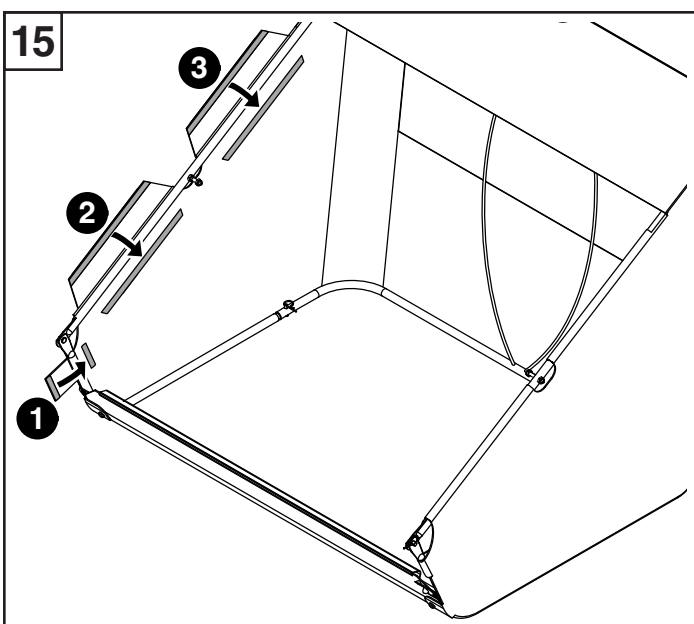
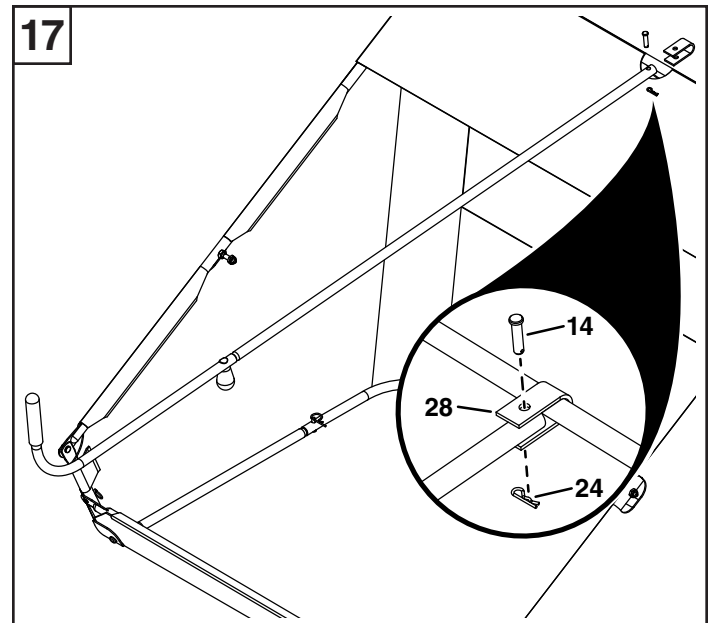
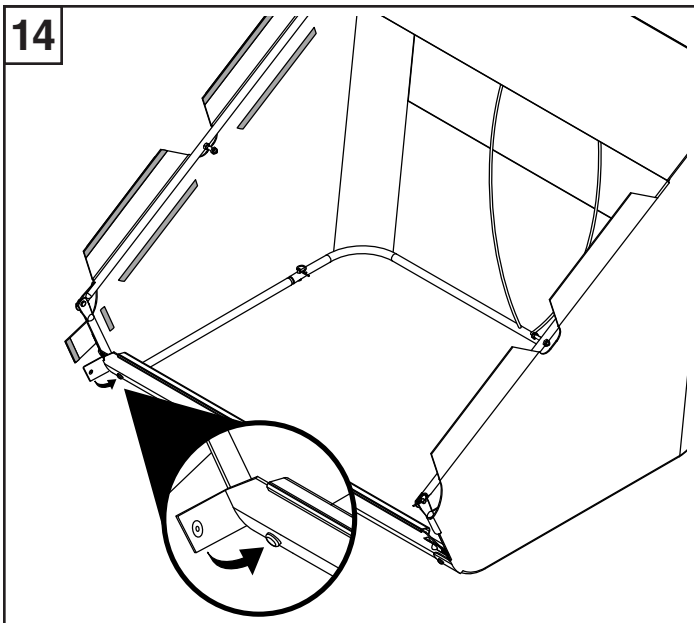
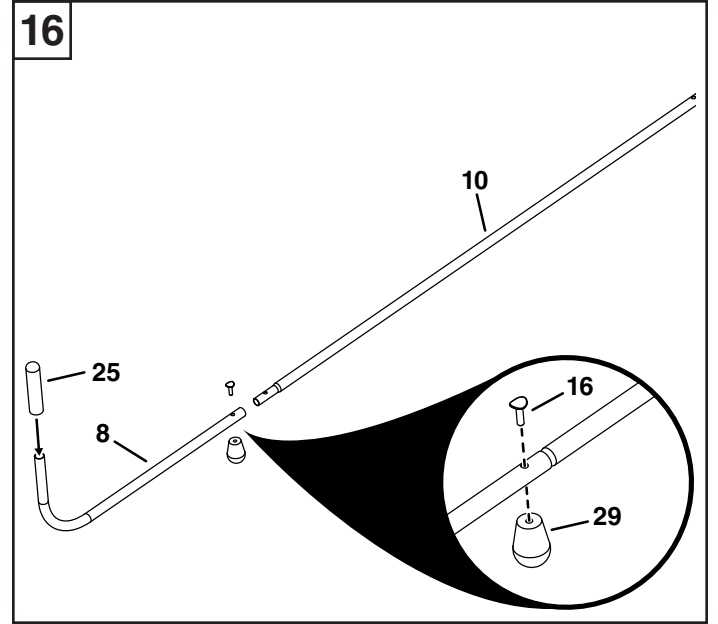
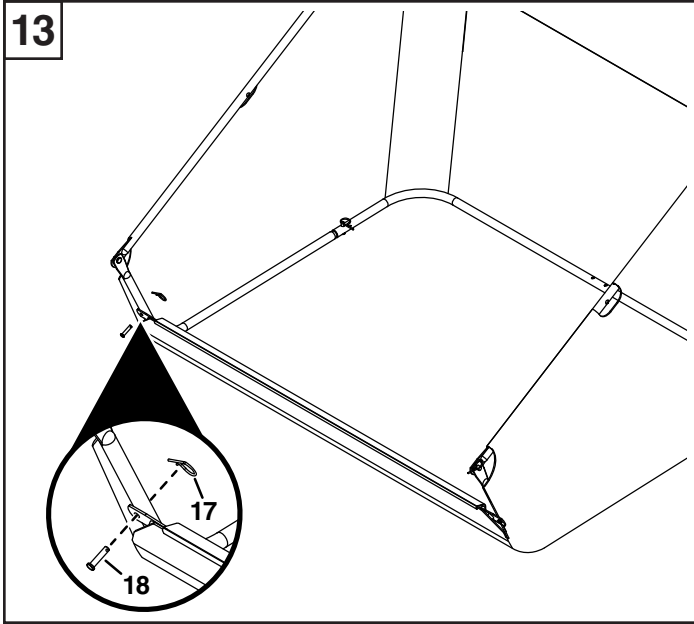


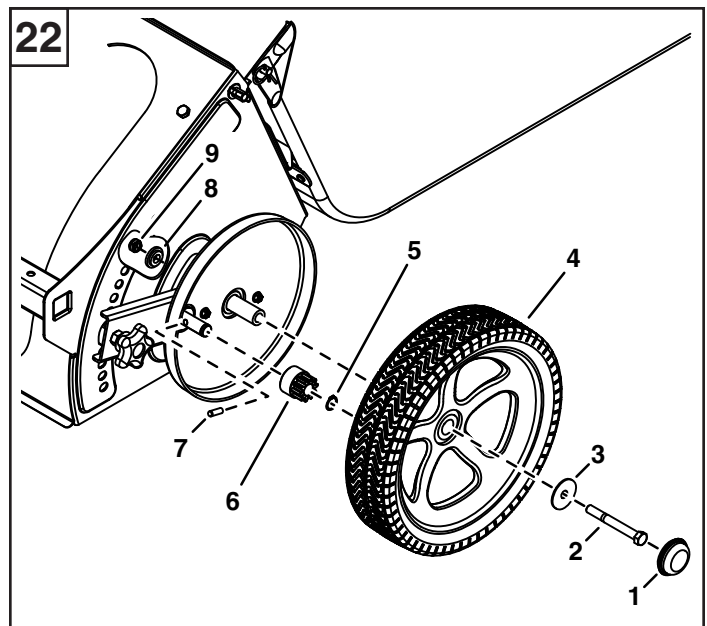
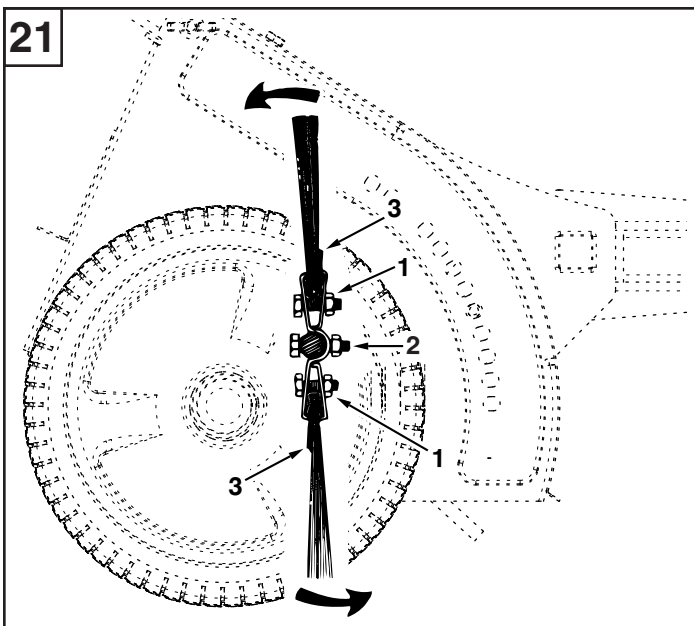
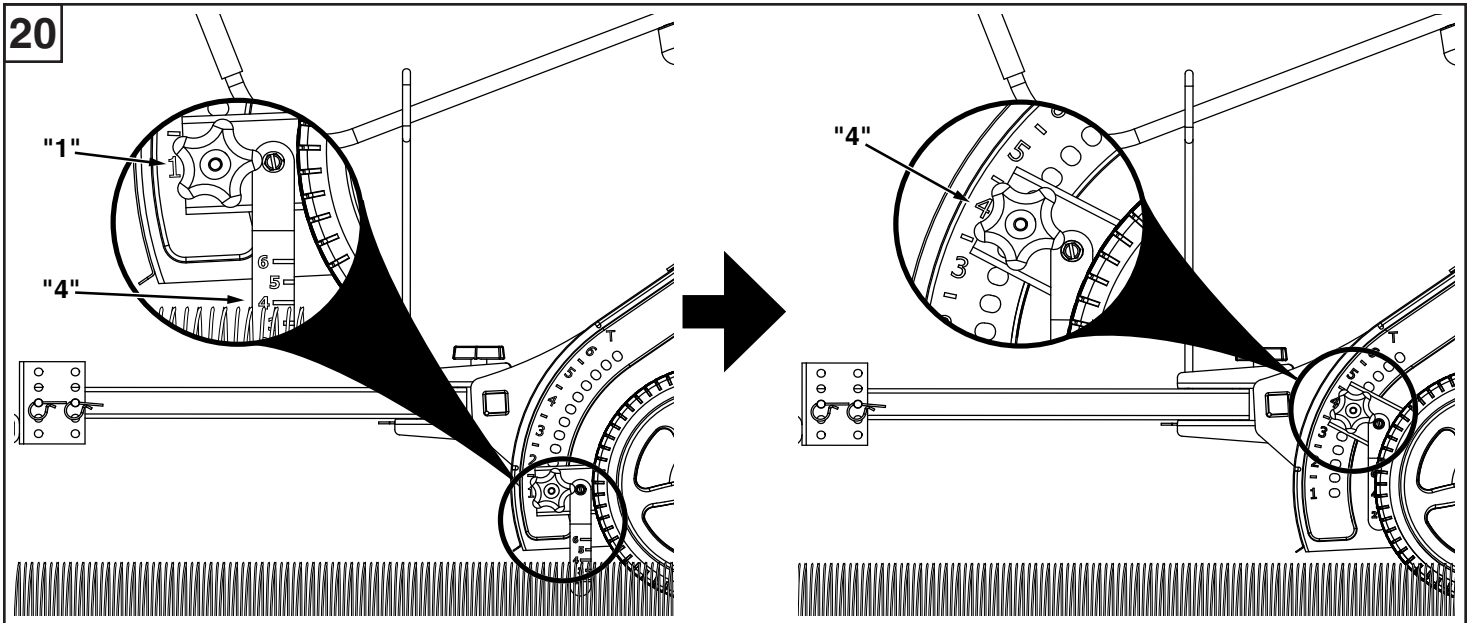
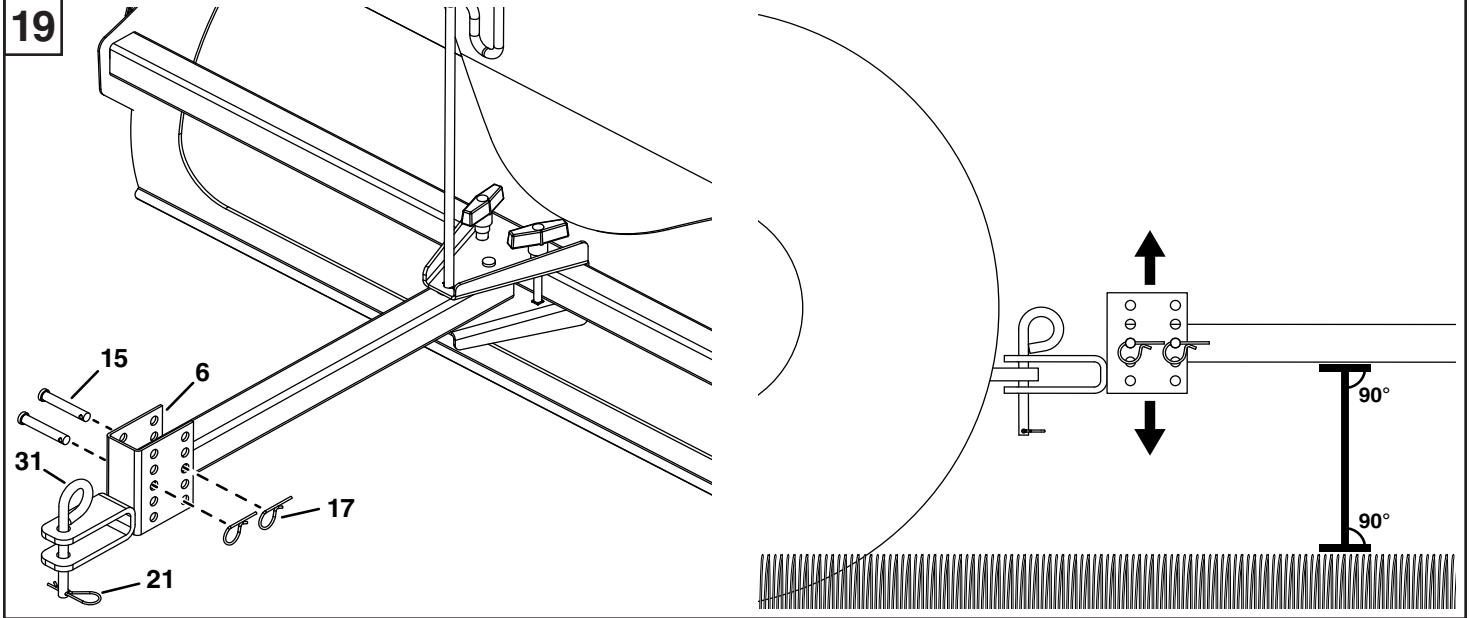
**45-0492**













## ENGLISH

### Safety

---

Read and understand the vehicle manual and these instructions before using this sweeper. Always instruct other users before they operate the sweeper.

### Symbols

---



Oil



Grease

### Operation

---



#### Risk of Injury

- Never allow children to handle the sweeper
- Never allow anyone to ride on the sweeper.
- Always wear footwear when working with the sweeper.
- Never operate the sweeper if foreign matter is stuck in the brushes. Turn off the vehicle engine, remove the foreign matter and check for damage. If the sweeper is damaged, repair before continuing to operate.



#### Risk of Overturning

- Check the loading capacity of the towing vehicle and only sweep appropriate amounts of grass and leaves into the grass bag.
- On starting off, make sure that the sweeper retains its balance and does not overturn.
- Do not work on slopes greater than 10°.
- Do not exceed 6 mph (9.6 km/h).
- Drive slowly and carefully, especially when turning and on uneven ground.

**Note:** The driving and braking characteristics depend on the towed load.



#### Risk of Fire

- Always keep the sweeper away from fire. Excessive heat can damage the brushes and grass bag and could cause the bag to burn.
- Always empty the grass bag before storing the sweeper; spontaneous combustion may occur.

### Attaching the Sweeper to Tow Vehicle (See Figure 19)

- Park the tow vehicle and sweeper on flat level ground.
- Attach the sweeper to the tractor hitch.
- Use the set of holes in the hitch bracket that best level drawbar to the ground.

### Setting the Brush Height (See Figure 20)

- Make sure draw bar is level to ground (see Attaching Sweeper to Tow Vehicle above).
- Pull out on height adjustment knob and set to the "1" position.
- Note the number that the top of the grass comes to on the grass height gauge.
- Pull out on the height adjustment knob and set to the same number as read from the grass height gauge.

### Emptying the Grass Bag

- Stop the towing vehicle and turn off the engine.
- Empty the grass bag by pulling on the dump handle.

### Using the Offset Hitch

- Loosen the two knobs on the drawbar bracket.
- Slide the drawbar to the left or right end of the sweeper housing.
- Tighten the two knobs on the drawbar bracket.

### Using the Transport Feature

- Use the transport feature when moving across pavement or areas you do not want to sweep.
- Empty grass bag of all debris (see Emptying the Grass Bag above).
- Pull out on the height adjustment knob and set to the "T" position.

### Maintenance

---

Lubricate the wheel bearings once during the season. Remove hub cap and apply a few drops of light oil.

Lubricate the brush axle at the beginning and end of the season.

Clean and grease drive gears every two years (See Figure 22). Remove hub cap (1), bolt (2), washer (3), wheel (4), step spacer (8), and nut (9).

### Service

---

#### Replace the Brushes (See Figure 21)

- Remove grass bag. Only loosen bolt and nut on the single brush retainers (1). Do not loosen double brush retainer (2).
- Note which side of brush the bristles overlap (3). Slide brush out.
- Install new brush with bristles overlap (3) as before.

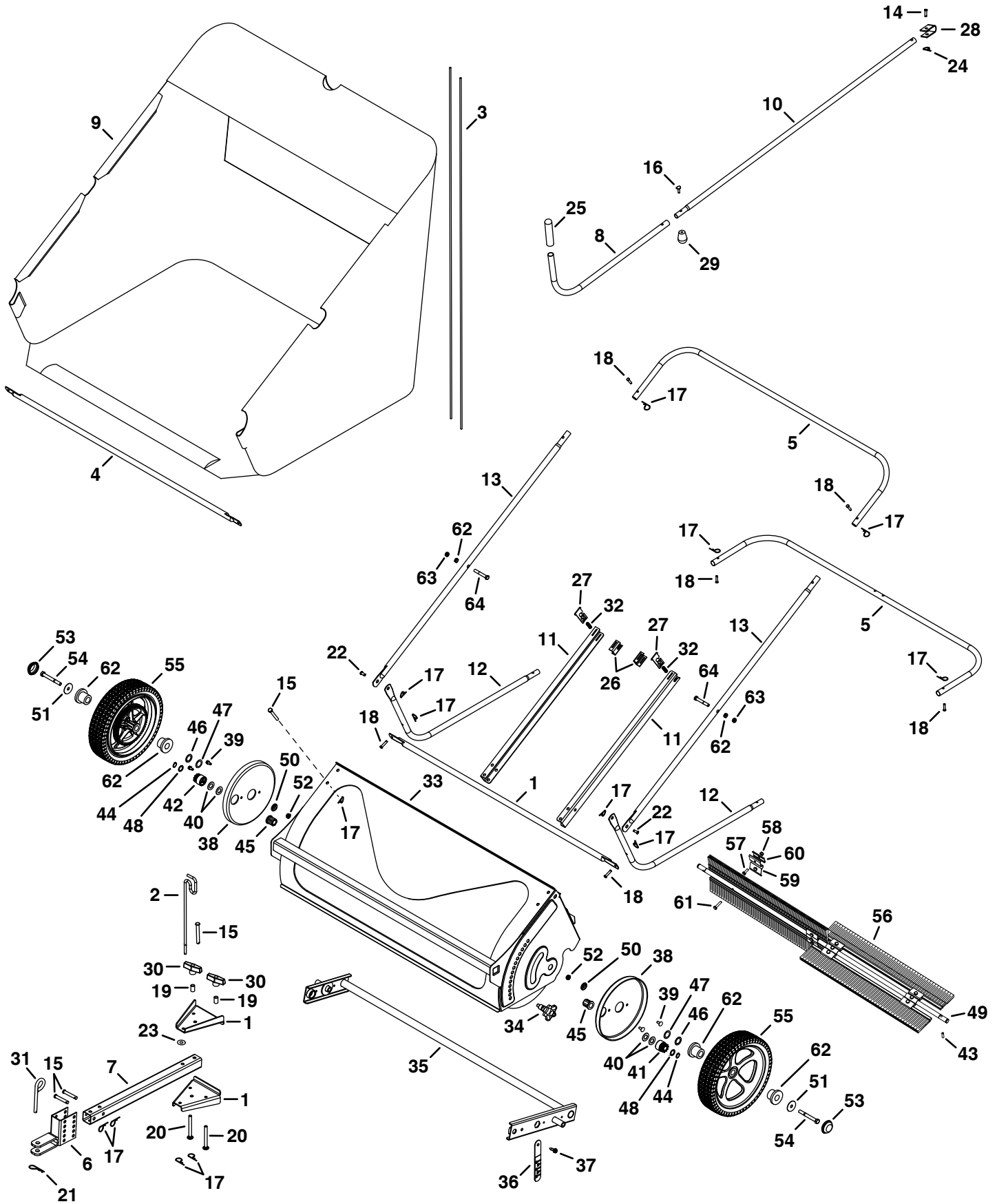
#### Wheel Gear and Pawl (See Figure 22)

Do not remove both wheels at the same time; parts are not interchangeable.

- Remove hub cap (1), bolt (2), washer (3), wheel (4), step spacer (8), and nut (9).
- Remove snap ring (5), ratchet gear (6), and drive pin (7). Clean shaft and gear.
- Install ratchet gear (6) and drive pin (7). Pin must move freely in shaft.
- Lightly grease shaft and fill ratchet gear (6) with grease.
- Lightly grease brush axle and gear teeth on wheel.
- Install hub cap (1), bolt (2), washer (3), wheel (4), step spacer (8), and nut (9).

**Note:** Brushes should only move during forward rotation. If brushes rotate in both directions, drive pin is jamming the ratchet gear. Disassemble and make sure drive pin moves freely.

# REPAIR PARTS ILLUSTRATION





## REPAIR PARTS LIST

REF	QTY	PART NO	DESCRIPTION	REF	QTY	PART NO	DESCRIPTION
1	2	27425	Drawbar Bracket	34	1	40891	Spring Loaded Pin
2	1	42661	Handle Holder	35	1	67730	Height Adjustment Tube
3	2	42646	Hopper Support Rod	36	1	27442	Brush Height Gauge
4	1	42020	Bag Frame Tube	37	1	710-0896	Hex Screw, 1/4-14 x 5/8"
5	2	42649	Rear Hopper Tube	38	2	41035	Dust Cover
6	1	67664	Hitch	39	4	48373	Pop Rivet
7	1	27421	Drawbar	40	4	40001	Shim Washer
8	1	42648	Lower Handle Tube	41	1	48651	Pinion Gear (LH)
9	1	42540	Hopper Bag	42	1	48652	Pinion Gear (RH)
10	1	42647	Upper Handle Tube	43	2	47046	Dowel Pin, 1/4 x 3/4"
11	2	27424	Bag Arm	44	2	42094	Retaining Ring
12	2	40897	Lower Hopper Tube	45	2	67407	Bearing Assembly
13	2	42539	Upper Hopper Tube	46	2	44008	Washer, 1-1/8"
14	1	43259	Clevis Pin, 5/16 x 1-1/4"	47	2	1540-31	Washer, 1-1/14"
15	7	HA23636	Clevis Pin, 3/8 x 2-1/4"	48	2	42093	Washer, .598"
16	1	43978	Bolt, 1/4-20 x 1"	49	1	40722	Brush Shaft
17	16	43055	Hair Pin, 3/32 x 1.8"	50	2	26538	Step Spacer
18	6	48365	Clevis Pin, 1/4 x 1.11"	51	2	141	Washer, 1-1/4"
19	2	42659	Spacer, 3/4"	52	2	1038	Nylock Jam Nut, 3/8"
20	2	44217	Carriage Bolt, 5/16-18 x 3"	53	2	41017	Hub Cap
21	1	43343	Hair Cotter Pin, 3/32 x 2-5/16"	54	2	44961	Hex Bolt, 3/8-24 x 3-1/4"
22	2	48366	Clevis Pin, 3/8 x 1/2"	55	2	40987	Wheel
23	1	47605	Washer, 1"	56	4	46780	Brush
24	1	HA3090	Hair Cotter Pin, .08 x 1-1/8"	57	8	43012	Hex Bolt, 1/4-20 x 3/4"
25	1	7071	Handle Grip	58	12	47189	Nylock Nut, 1/4"
26	2	27426	Pivot Rod Support Bracket	59	4	23580	Brush Retainer (Double)
27	2	26484	Pivot Rod Retainer	60	8	23581	Brush Retainer (Single)
28	1	23878	U-Clamp	61	4	43661	Hex Bolt, 1/4-20 x 1"
29	1	42651	Knob	62	2	712-3008	Jam Nut, 3/8"
30	2	43720	Wing Knob	63	2	42210	Nylock Jam Nut, 3/8"
31	2	23353	Hitch Pin	64	2	43432	Hex Bolt, 3/8-16 x 2-1/2"
32	2	41036	Compression Spring		1	42571	Owner's Manual
33	1	67634	Sweeper Housing				





***SpeedEPart*** *the fastest way to purchase parts* [www.speedepart.com](http://www.speedepart.com)

**REPAIR PARTS**

Agri-Fab, Inc.  
303 West Raymond  
Sullivan, IL. 61951  
217-728-8388  
[www.agri-fab.com](http://www.agri-fab.com)