

®



WA409I

Fits models: WG545 series, WG565 series, WG575 series

S'adapte aux modèles suivants: Série WG545, Série WG565, Série WG575

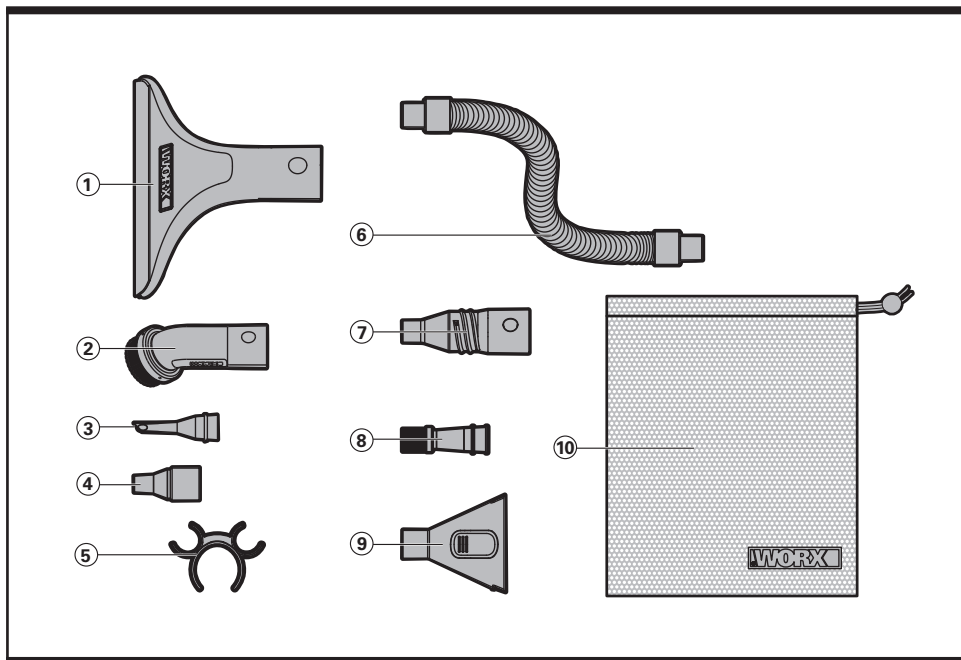
Para los modelos: Series WG545, Series WG565, Series WG575

WARNING!

User must read the product manual to fully understand this product prior to use.

CAUTION!

The user must wear the appropriate clothing and safety gear when operating this product. Be aware of all bystanders, pets and objects in a close proximity. Thoroughly inspect the area where the equipment is to be used and remove all stones, sticks, wires, and other foreign objects.

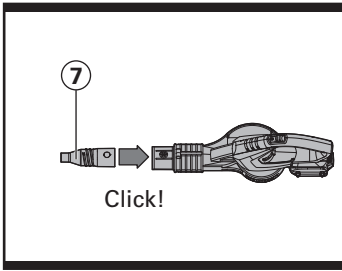
1. WIDE NOZZLE**2. DUST BRUSH****3. INFLATOR NOZZLE****4. DUST TUBE****5. ACCESSORY CLIP HOLDER (CONTAINS 3 AND 8)****6. EXTENSION HOSE****7. SHORT TUBE****8. DETAIL BRUSH****9. DEFLATION COVER****10. ACCESSORY BAG**

ASSEMBLY AND OPERATION

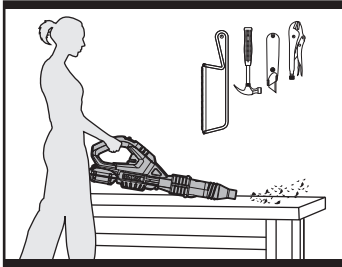
1. SHORT TUBE APPLICATION:

Attach the Short Tube (7) as shown in Fig. A1:
Also to be used as an adapter for other WORXAIR™ attachments.

Operate according to Fig. A2:



A1



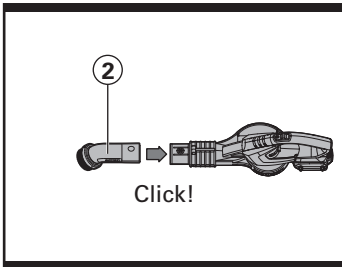
A2

4

2. DUST BRUSH APPLICATION:

Attach the Dust Brush (2) as shown in Fig. B1.

Operate according to Fig. B2:



B1

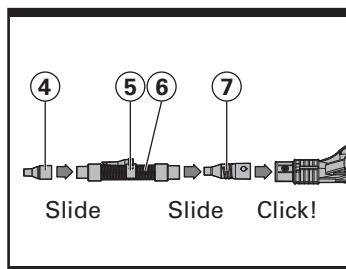


B2

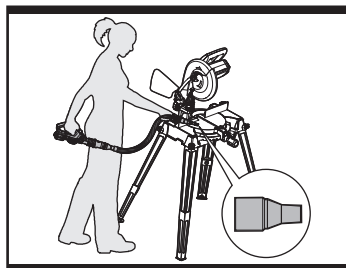
3. DUST TUBE APPLICATION:

Attach the DustTube (4) as shown in Fig. C1. Must use ShortTube (7) and Extension Hose (6).

Operate according to Fig. C2:



C1

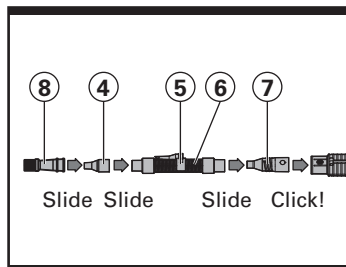


C2

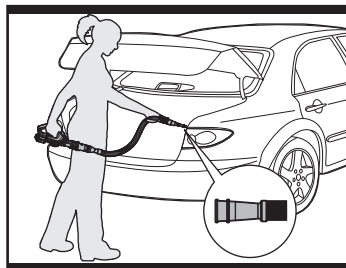
4. DETAIL BRUSH APPLICATION:

Attach the Detail Brush (8) as shown in Fig. D1. Must use ShortTube (7), Extension Hose (6), and DustTube (4).

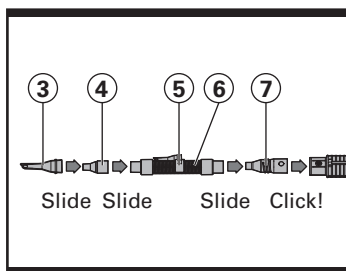
Operate according to Fig. D2:



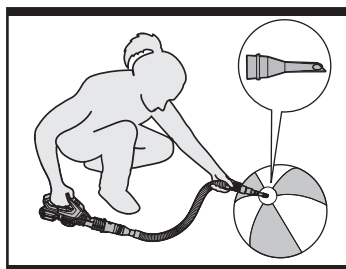
D1



D2

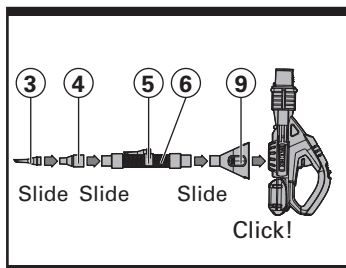


E1

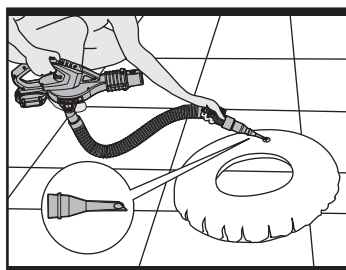


E2

6



F1



F2

5. AIR INFLATOR NOZZLE APPLICATION:

Attach the Air Inflator Nozzle (3) as shown in Fig. E1. Must use Short Tube (7), Extension Hose (6), and Dust Tube (4).

Operate according to Fig. E2:

6. AIR DEFLATOR APPLICATION:

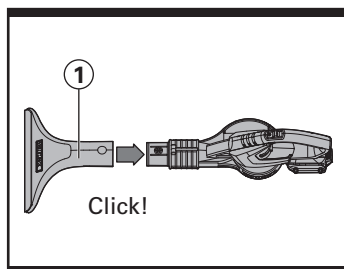
Attach the Air Deflation Cover (9) as shown in Fig. F1. Must use Extension Hose (6) and Dust Tube (4). Air Inflator Nozzle (3) or Dust Tube (4) can be used depending on the object.

Operate according to Fig. F2:

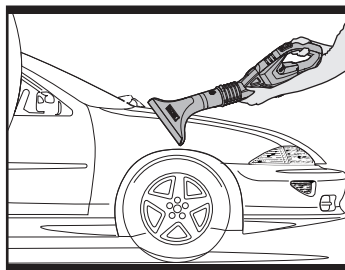
7. WIDE NOZZLE APPLICATION:

Attach the Wide Nozzle (1) as shown in Fig. G1:

Operate according to Fig. G2:



G1



G2