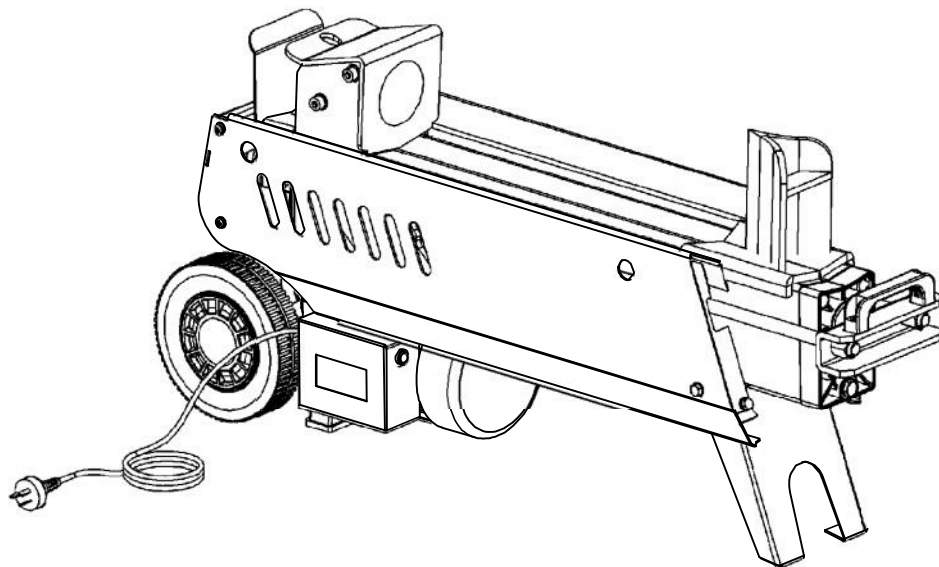


# Pow<sup>▼</sup>R<sup>▼</sup>kraft<sup>®</sup>

## 7-Ton Electric Log Splitter

Questions: E-mail [Support@Powrkraft.com](mailto:Support@Powrkraft.com)



## FOR YOUR SAFETY

**READ AND UNDERSTAND THE ENTIRE MANUAL  
BEFORE OPERATING MACHINE**

**MODEL NUMBER :    PK65575**

**SERIAL NUMBER :    \_\_\_\_\_**

Both model number and serial number may be found on the main label.  
You should record both of them in a safe place for future use.

**Save This Manual for Future Reference**

Revision 12-16-13

**7 TON LOG SPLITTER – Owner's Manual**

# SAFETY WARNINGS & CAUTIONS

## SAFETY WARNINGS & INSTRUCTIONS

SYMBOL AFFIXED TO THE MACHINE

### • UNDERSTAND YOUR LOG SPLITTER

Read and understand the owner's manual and labels affixed to the log splitter. Learn its application and limitations as well as the specific potential hazards particular to it.



### • DRUGS, ALCOHOL AND MEDICATION

Do not operate the log splitter while under the influence of drugs, alcohol, or any medication that could affect your ability to use it properly.

### • AVOID DANGEROUS CONDITIONS

Put the log splitter on a 23" – 30" high, stable, flat, and level work bench where there is plenty of room for handling, and help the operator stay alert. Bolt the log splitter to the work surface if it tends to slip, walk, or slide.

Keep your work area clean and well lighted. A cluttered area invites injuries.

Do not use the log splitter in wet or damp areas or expose it to rain. Do not use it in areas where fumes from paint, solvents or flammable liquids pose a potential hazard.

### • INSPECT YOUR LOG SPLITTER

Check your log splitter before turning it on. Keep guards in place and in working order. Form a habit of checking to see that keys and adjusting wrenches are removed from tool area before turning it on. Replace damaged, missing or failed parts before using it.



### • DRESS PROPERLY

Do not wear loose clothing, gloves, neckties or jewelry (rings, wrist watches). They can be caught in moving parts. Wear protective electrically non conductive gloves and non-skid <sup>footwear</sup> are recommended when working. Wear protective hair covering to contain long hair, preventing it from getting caught in machinery.



### • PROTECT YOUR EYES AND FACE

Any log splitter may throw foreign objects into the eyes. This can cause permanent eye damage. Always wear safety goggles. Everyday eyeglasses have only impact resistant lenses. They are not safety glasses.



Do not put the log splitter on the ground for operations. This is awkward operating position that the operator has to bring his face close to the machine, and thus risks being struck by wood chips or debris.

### • EXTENSION CORDS

Improper use of extension cords may cause inefficient operation of the log splitter which can result in overheating.

*14ga @ 20ft, 12ga @ 50ft, 10ga @ 100ft.*

***These are minimum cord requirements***

Avoid use of free and inadequately insulated connections. Connections must be made with protected material suitable for outdoor use.

### • AVOID ELECTRICAL SHOCK

Check that the electric circuit is adequately protected and that it corresponds with the power, voltage and frequency of the motor. Check that there is a ground connection, and a regulation differential switch upstream.

Ground the log splitter. Prevent body contact with grounded surfaces: pipes, radiators, ranges, and refrigerator enclosures.

Never open the pushbutton box on the motor. Should this be necessary, contact a qualified electrician.

Make sure your fingers do not touch the plug's metal prongs when plugging or unplugging the log splitter.

### • KEEP VISITORS AND CHILDREN AWAY

The log splitter must be always operated by one person only. Other people should keep a safe distance from the work area, especially when the log splitter is under operations. Never have another person help you with freeing jammed log.

### • INSPECT YOUR LOG

Make sure there are no nails or foreign objects in logs to be split. The ends of the logs must be cut square. Branches must be cutoff flush with the trunk.

### • DON'T OVERREACH

Floor must not be slippery.

Keep proper footing and balance at all times.

Never stand on log splitter. Serious injury could occur if the tool is tipped or if the cutting tool is unintentionally contacted. Do not store anything above or near the log splitter where anyone might stand on the tool to reach them.

### • AVOID INJURY FROM UNEXPECTED ACCIDENT

Always pay full attention to the movement of the log pusher.

Do not attempt to load the log on until the log pusher has stopped.

Keep hands out of the way of all moving parts.

### • PROTECT YOUR HANDS

Keep your hands away from splits and cracks which open in the log;

They may close suddenly and crush or amputate an appendage.

Do not remove jammed logs with you hands.



#### • DON'T FORCE TOOL

It will do a better and safer job at its design rate. Never try to split logs larger than those indicated in the specifications table. This could be dangerous and may damage the machine.

Don't use log splitter for a purpose for which it was not intended.

#### • NEVER LEAVE TOOL RUNNING UNATTENDED

Don't leave tool until it has come to a complete stop and unplugged.

#### • DISCONNECT POWER

Unplug when not in use, before making adjustments, changing parts, cleaning, or working on the log splitter; Consult technical manual before servicing.

#### • PROTECT THE ENVIRONMENT

Take used oil to an authorized collection point or follow the stipulations in the country where the log splitter is used.

Do not discharge into drains, soil or water.

#### • MAINTAIN YOUR LOG SPLITTER WITH CARE

Keep the log splitter clean for best and safest performance.

#### • MAKE THE WORKSHOP CHILDPROOF

Lock the shop. Disconnect master switches. Store the log splitter away from children and others not qualified to use it.



## TABLE OF CONTENTS

Front Page.....	1
Safety Warnings & Cautions .....	2-4
Application Conditions .....	5
Specifications .....	5
Electrical Requirements .....	5
Set up and Preparation for Operation .....	6-7
Wiring Diagram .....	7
Plumbing Diagram .....	7
Log Splitter Operation .....	8-9
Freeing a Jammed Log .....	9
Replacing Hydraulic Oil .....	10
Sharpening Wedge .....	10
Trouble Shooting .....	11
Parts Schematic.....	12
Parts List.....	13-14



# APPLICATION CONDITIONS

This log splitter is a home use model. It is designed for operating under ambient temperatures between 41°F and 104°F. The surrounding humidity should be less than 50% at 104°F. It can be stored or transported under ambient temperatures between -13°F and 131°F.

For operation below 41° it is recommended that unit is stored in area above 41° or it is stored with magnetic block heater attached to keep oil warm before use.

# SPECIFICATIONS

Model Number		PK65575
Motor		1500W / 2300W Output Durina 7 ton cvcle 110 Volt
Log Capacity	Diameter	12" 18 Most woods
	Length	20"
Splitting Force		7-Ton
Hydraulic Pressure		2320 PSI
Hydraulic Oil Capacity		6.8 Qt.
Overall Size	Length	42"
	Width	11"
	Height	20"
Weight		172lbs

Specification subject to change without notice

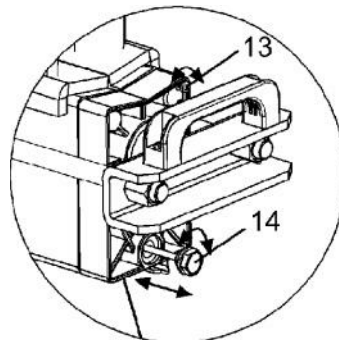
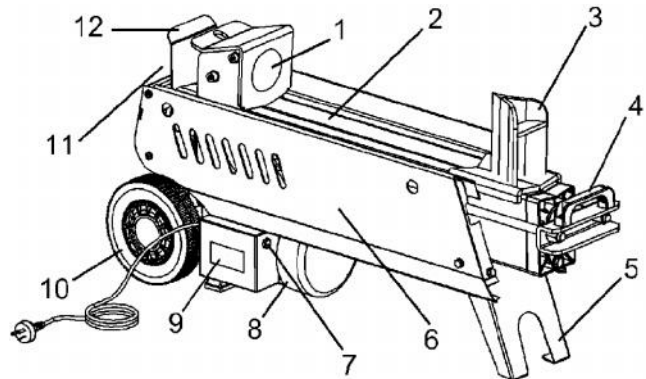
# ELECTRICAL REQUIREMENTS

Connect the main leads to a standard 110 volt electrical supply which has protection devices of under-voltage, over-voltage, over-current as well as a residual current device (RCD) which maximum residual current rated at 0.03A.

# SET UP AND PREPARATION FOR OPERATION

1. Bolt the Support Leg to the Log Splitter, lift the log splitter by the handles at both ends and place it on a 2' – 2.5 ft. high, stable, flat and level work surface.
2. Familiarize yourself with the controls and features of this log splitter in the illustrations.

1. Log Pusher
2. Work Table
3. Wedge
4. Lift Handle
5. Support Leg
6. Log Retaining Plates
7. Switch
8. Motor
9. Pushbutton Box
10. Wheels for Minor Moving ONLY.
11. Hydraulic Control Lever
12. Control Lever Guard
13. Bleed Screw
14. Oil Drain Bolt w/ Dipstick



**Before operating the log splitter, the Bleed Screw should be loosened by a few rotations until air can go in and out of the oil tank smoothly.**

**Air flow thru the Bleed Screw hole should be detectable while the log splitter is under operations.**

**Before moving the log splitter, make sure the Bleed Screw is tightened to avoid oil leaking from this point.**



***FAILURE TO LOOSEN THE BLEED SCREW WILL KEEP THE SEALED AIR IN HYDRAULIC SYSTEM BEING COMPRESSED AFTER BEING DECOMPRESSED. SUCH CONTINUOUS AIR COMPRESSION AND DECOMPRESSION WILL BLOW OUT THE SEALS OF THE HYDRAULIC SYSTEM AND CAUSE PERMANENT DAMAGE TO THE LOGSPLITTER.***

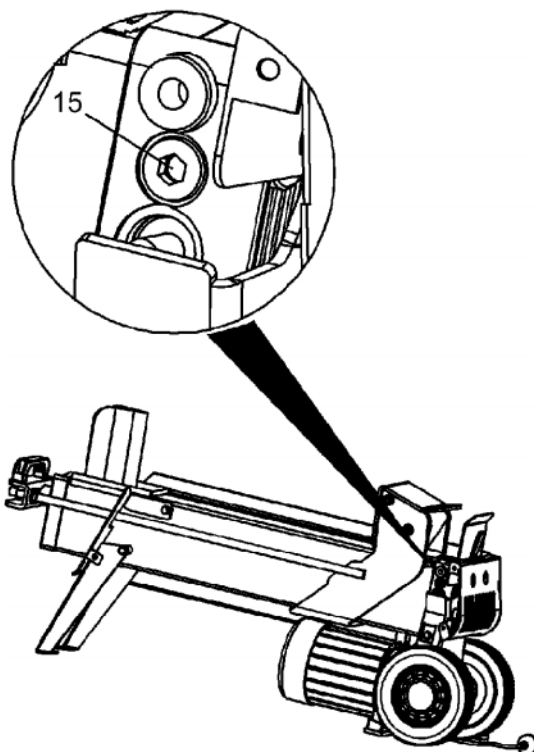
## 15. Max Pressure Limiting Screw



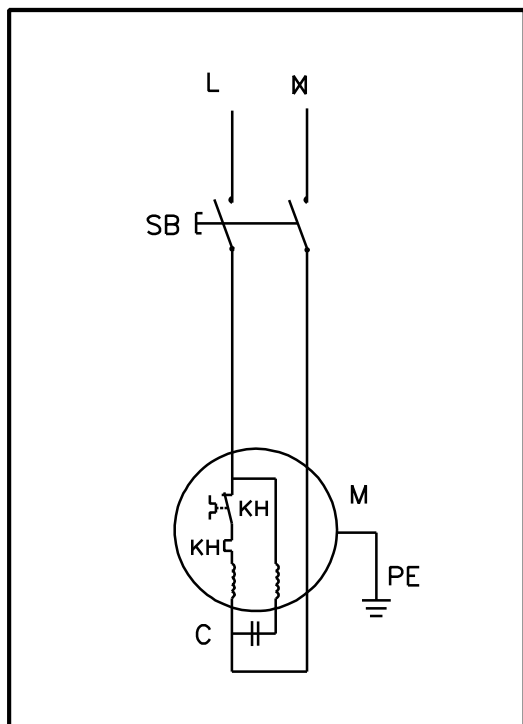
**DO NOT ADJUST THE MAX  
PRESSURE LIMITING SCREW!**

Max pressure was set by the Manufacturer and the max pressure limiting screw is sealed with glue to ensure the log splitter works under pressure no more than 7 tons. The setting was done by qualified mechanic with professional instruments.

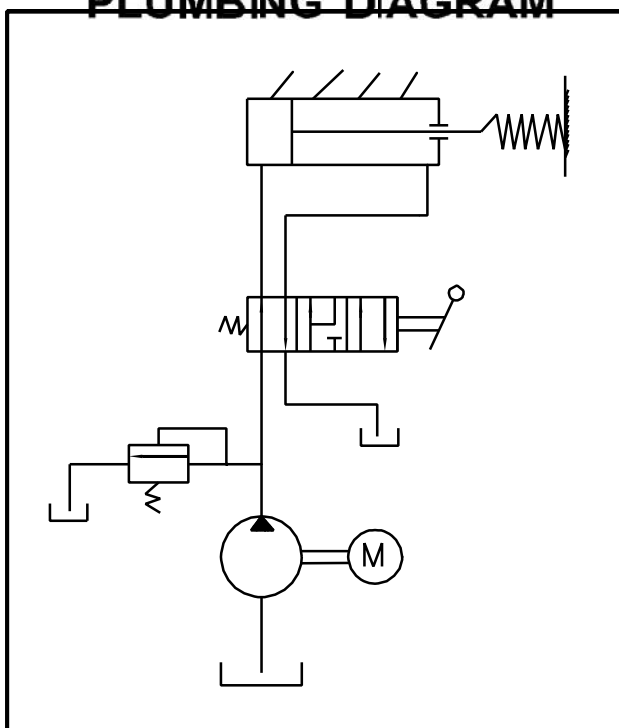
Unauthorized resetting will void warranty and will cause the hydraulic pump to fail **RESULTING IN SERIOUS INJURY AS WELL AS DAMAGE TO THE MACHINE.**



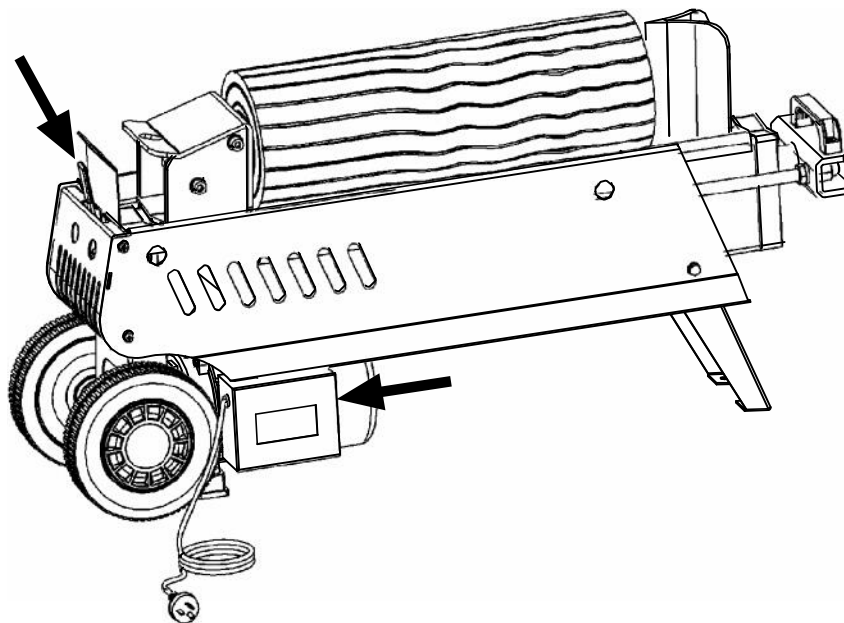
## WIRING DIAGRAM



## PLUMBING DIAGRAM



# LOG SPLITTER OPERATION



This log splitter is equipped with “ZHB” control system that requires to be operated by both hands of the user – Left hand controls the hydraulic control lever while right hand controls the pushbutton switch. The log splitter will freeze upon absence of either hand. Only after both hands release the controls, the log pusher starts to return backward to the starting position.



The splitting force and speed are governed by the 2-stage control lever. Push the lever in the 1st stage about half way for faster speed at less splitting force to split usual logs; Push the lever in the 2nd stage all way for maximum splitting force at slower speed to split particularly hard and seasoned logs. These stages can be shifted by simply raising and lowering the lever.

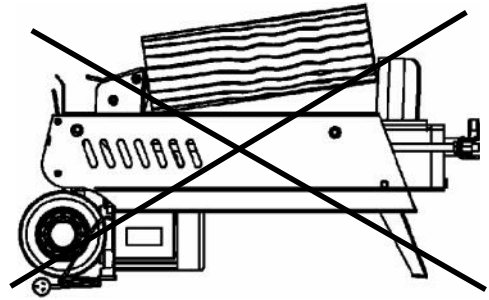


**Never force the log splitter for more than 5 seconds by keeping pressure on it to split excessively hard wood. Excessive force will void warranty.**

After this time interval, the oil under pressure will be overheated and the machine could be damaged. For such extremely hard log, rotate it by 90° to see whether it can be split in a different direction. In any case, if you are not able to split the log, this means that its hardness exceeds the capacity of the machine and thus that log should be discarded to protect the log splitter.



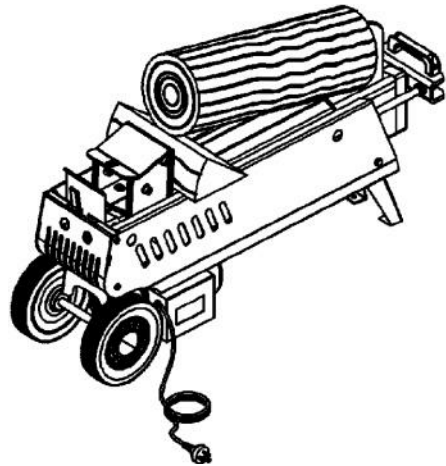
Always set logs firmly on the log retaining plates and work table. Make sure logs will not twist, rock or slip while being split. Do not force the blade by splitting the log on the upper part. This will break the blade or damage the machine.



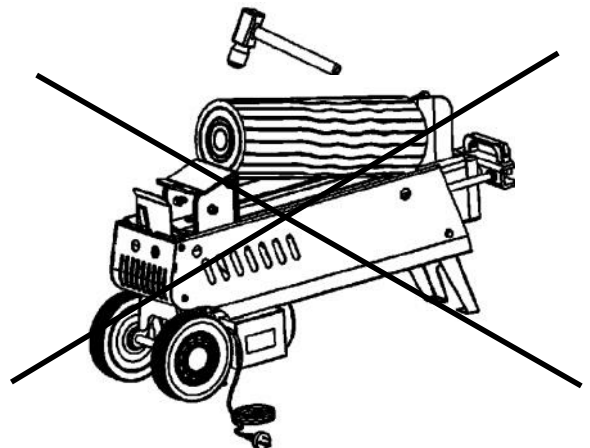
Break log in the direction of its growing grain. Do not place log across the log splitter for splitting. It may be dangerous and may seriously damage the machine.  
Do not attempt to split 2 pieces of logs at the same time. One of them may fly up and hit you.

## FREEING A JAMMED LOG

- Release both controls.
- After the log pusher moves back and completely stops at its starting position, insert a wedge wood under the jammed log.
- Start the log splitter to push the wedge wood to go completely under the jammed one.
- Repeat above procedure with sharper slope wedge woods until the log is completely freed.



Do not try to knock the jammed log off. Knocking about will damage the machine or may launch the log and cause accident.

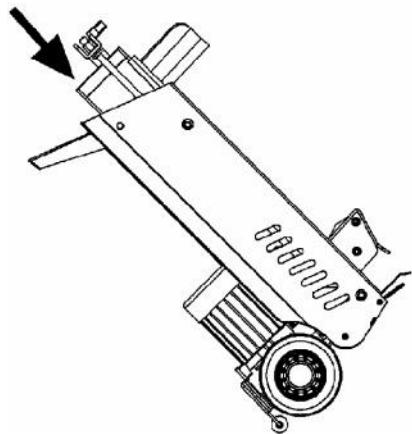
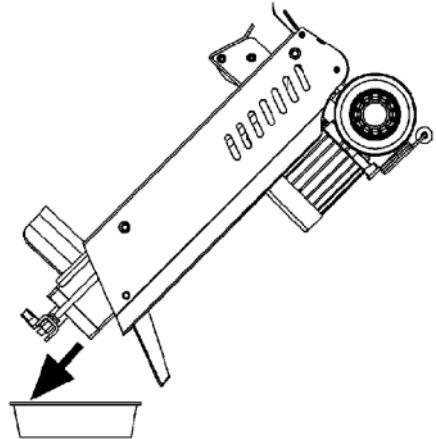


# REPLACING HYDRAULIC OIL

Replace the Hydraulic oil in the log splitter after every 400 hours of use. Take following steps to replace it.

- Make sure all moving parts stop and the log splitter is unplugged.
- Unscrew Oil Drain Bolt with Dipstick to remove it.
- Turn the log splitter on the Support Legs side over a min. 1 gal. capacity container to drain the hydraulic oil off.
- Turn the log splitter on the the motor side.
- Refill fresh hydraulic oil at the volume as per the hydraulic oil capacity of a particular model indicated in above specifications table.
- Clean the surface of Dipstick on the Oil Drain Bolt and put it back into the oil tank while keep the log splitter vertically.
- Make sure the level of the refilled oil is just between 2 grooves around the Dipstick.
- Clean the Oil Drain Bolt before thread them back. Make sure they are tightened to avoid leakage before place the log splitter horizontally.

**Periodically check oil level to ensure it is between 2 grooves around the Dipstick. Upon Lower oil level, oil refilling is required.**



**Following hydraulic oils or equivalent are recommend for the log splitter's hydraulic transmission system:**

SHELL Tellus 22

MOBIL DTE 11

BP Energol

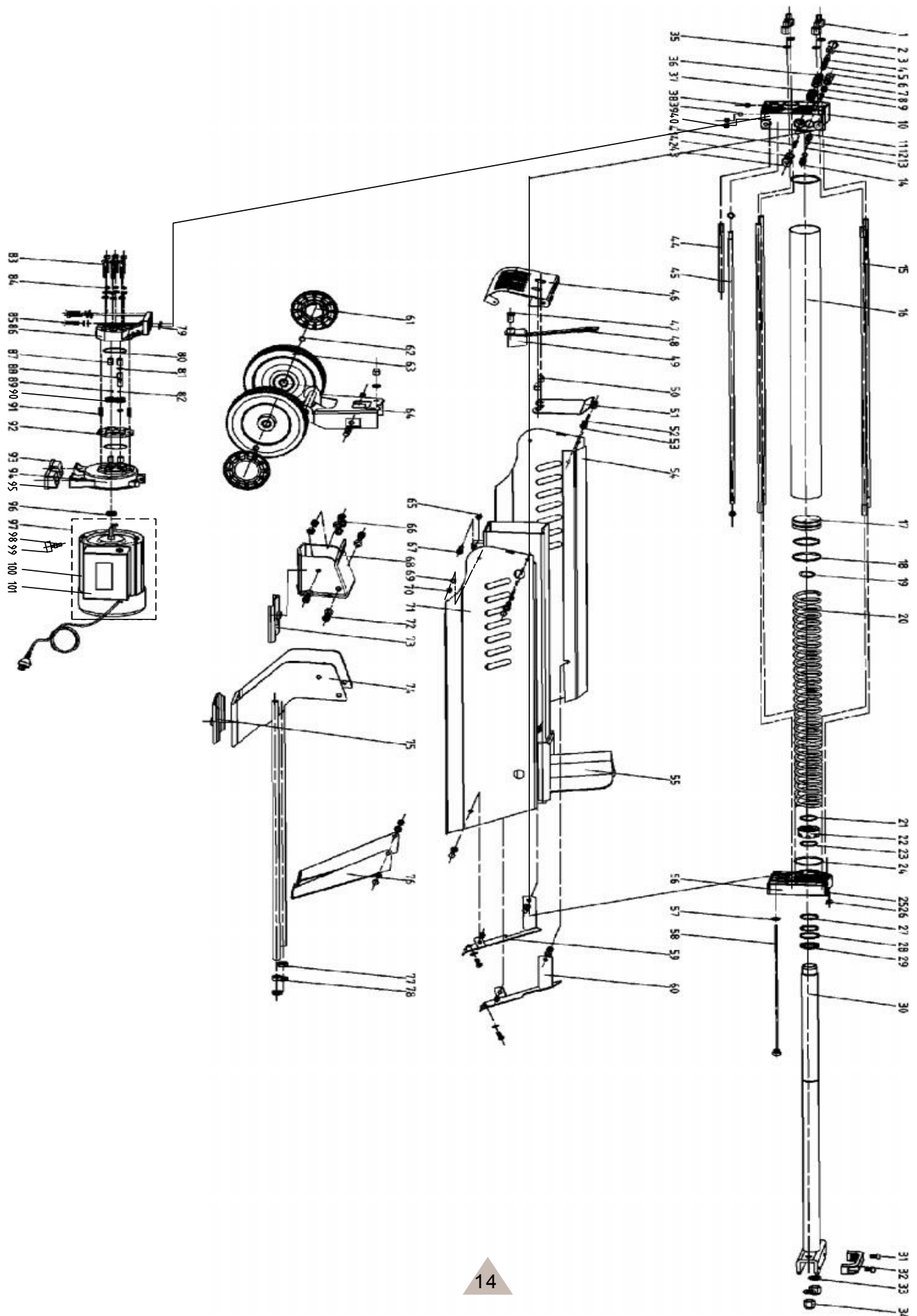
10W (22-32 ISO Viscosity) Hydraulic Tractor Fluid / Heavy Duty Hydrostatic Oil

## SHARPENING WEDGE

After using the log splitters for some time, sharpen the wedge of the log splitter using a fine-toothed file and smooth any burrs or crushed area along the cutting edge.

# TROUBLE SHOOTING

PROBLEM	PROBABLE CAUSE	REMEDY SUGGESTED
Fails to split logs	Log is improperly positioned	Refer to " Log Splitter Operation" section for perfect log loading.
	The sizes or hardness of the log exceeds the capacity of the machine	Reduce the log sizes before splitting it on the log splitter.
	Wedge cutting edge is blunt	Refer to " Sharpening Wedge " section to sharpen the cutting edge.
	Oil leaks	Locate leak(s) and contact the dealer.
	Unauthorized adjustment was made on Max. Pressure Limiting Screw. Lower max pressure rating was set.	Contact the dealer.
The log pusher moves jerkily, making unfamiliar noise or vibrating a lot	Lack of hydraulic oil and excessive air in the hydraulic system.	Check oil level for possible oil refilling. Contact the dealer.
Oil leaks around cylinder ram or from other points.	Air sealed in hydraulic system while operating.	Loosen Bleed Screw by some rotations before operating the log splitter.
	Bleed Screw is not tightened before moving the log splitter.	Tighten the Bleed Screw up before moving the log splitter.
	Oil Drain Bolt with Dipstick is not tight.	Tighten the Oil Drain Bolt with Dipstick.
	Hydraulic Control Valve Assembly and / or seal(s) worn.	Contact the dealer.





## Parts List Model 65575 7 Ton

Part No..	Description	Quantity
LS7T-52-1	NUT	4
LS7T-52-2	Circlip	1
LS7T-52-3	WASHER	6
LS7T-52-4	VALVE CORD	1
LS7T-52-5	O-RING	1
LS7T-52-6	VALVE RETRACT SPRING SEAT	1
LS7T-52-7	O-RING	4
LS7T-52-8	SPRING	1
LS7T-52-9	VALVE CORE	1
LS7T-52-10	ALUMINIUM COVER ( REAR )	1
LS7T-52-11	VALVE SLEEVE	1
LS7T-52-12	O-RING	2
LS7T-52-13	ADJUSTING SPRING OF VALVE CORE	1
LS7T-52-14	SEAT OF ADJUSTING SPRING	1
LS7T-52-15	STUD	4
LS7T-52-16	CYLINDER	1
LS7T-52-17	PISTON	1
LS7T-52-18	WASHER	1
LS7T-52-19	O-RING	1
LS7T-52-20	RETRACT SPRING	1
LS7T-52-21	Circlip	1
LS7T-52-22	CIRCLIP	1
LS7T-52-23	O-RING	1
LS7T-52-24	O-RING	2
LS7T-52-25	O-RING	1
LS7T-52-26	Wing Screw/Bleed Screw	1
LS7T-52-27	BELT	1
LS7T-52-28	RING	1
LS7T-52-29	SEAL	1
LS7T-52-30	Piston Rod	1
LS7T-52-31	BOLT	2
LS7T-52-32	PLASTIC HANDLE	1
LS7T-52-33	WASHER	2
LS7T-52-34	NUT	2
LS7T-52-35	COPPER GASKET	4

Part No..	Description	Quantity
LS7T-52-36	SLIDING PRESSURE SENSOR SLEEVE	1
LS7T-52-37	O-RING	4
LS7T-52-38	ADJUSTING SCREW	2
LS7T-52-39	STEEL SALL	1
LS7T-52-40	UNILATERAL VALVE	1
LS7T-52-41	SPRING	1
LS7T-52-42	O-RING	1
LS7T-52-43	Valve SEAT	1
LS7T-52-44	INPUT OIL TUBE	1
LS7T-52-45	OIL TUBE DIFFERENTIAL	1
LS7T-52-46	COVER BAFFLE	1
LS7T-52-47	CONTRAL HANDLE NUT	1
LS7T-52-48	CONTROL LEVER COVER	1
LS7T-52-49	CONTROL LEVER	1
LS7T-52-50	NUT CAP	3
LS7T-52-51	CLAPBOARD	1
LS7T-52-52	BOLT	12
LS7T-52-53	WASHER	21
LS7T-52-54	GUARD ( L )	1
LS7T-52-55	FRAME WELDMENT	1
LS7T-52-56	CYLINDER COVER FRONT	1
LS7T-52-57	WAHSER	1
LS7T-52-58	DIPSTICK	1
LS7T-52-59	GUARD COVER ( R )	1
LS7T-52-60	GUARD COVER ( L )	1
LS7T-52-61	WHEEL COVER	2
LS7T-52-62	CIRCLIP FOR SHAFT	2
LS7T-52-63	TIRE	2
LS7T-52-64	WHEEL BRACKET	1
LS7T-52-65	NUT	5
LS7T-52-66	NUT	4
LS7T-52-67	SCREW	1
LS7T-52-68	LOG PUSHER	1
LS7T-52-69	WASHER	4
LS7T-52-70	SCREW	4
LS7T-52-71	GUARD ( R )	1
LS7T-52-72	BOLT	4
LS7T-52-73	PLASTIC INSERTS	1

Part No..	Description	Quantity
LS7T-52-74	PLASTIC INSERTS	1
LS7T-52-75	LOG PUSHER CONNECTION	1
LS7T-52-76	WELDMENT BRACKET	1
LS7T-52-77	NUT	2
LS7T-52-78	SPRING WASHER	2
LS7T-52-79	O-RING	2
LS7T-52-80	O-RING	2
LS7T-52-81	SNAP WASHER-SHAFT	2
LS7T-52-82	STEEL BALL	1
LS7T-52-83	BOLT	6
LS7T-52-84	SPRING WASHER	9
LS7T-52-85	BOLT	3
LS7T-52-86	GEAR PUMP COVER	1
LS7T-52-87	SLIDING PRESSURE SENSOR SLEEVE	4
LS7T-52-88	Gear Shaft	1
LS7T-52-89	PIN	1
LS7T-52-90	GEAR	2
LS7T-52-91	PIN	2
LS7T-52-92	GEAR HOUSING PLATE	1
LS7T-52-93	GASKET OF RUBBER FOOT	1
LS7T-52-94	MOTOR COVER	1
LS7T-52-95	GASKET OF RUBBER FOOT ( L )	1
LS7T-52-96	SEAL	1
LS7T-52-97	MOTOR & SWITCH	1
LS7T-52-98	NUT	1
LS7T-52-99	BOLT	1
LS7T-52-100	MOTOR	1
LS7T-52-101	SWITCH BOX	1



# Parts Request Form

Fax to 541-895-2756 or E-mail  
Parts@PowRkraft.com

Name: \_\_\_\_\_

Address: \_\_\_\_\_

City State Zip: \_\_\_\_\_

Phone: \_\_\_\_\_

E-mail: \_\_\_\_\_

Model Number: \_\_\_\_\_

Serial Number: \_\_\_\_\_

Purchased From: \_\_\_\_\_

Purchase Date: \_\_\_\_\_

Item No.	Description	Qty	Price	Amount

Comments:

# Pow'R'kraft Brand

## LIMITED WARRANTY

Unless otherwise stated on purchase invoice, Betst Products, Inc. warrants to original Purchaser that Pow'R'kraft products are free from major defects in material under normal use and service for a period of Two (2) Years from the date the product is purchased or shipped whichever date is later. Commercial use 180 days. Use at address that is not yours, is considered commercial use. Consumable, Expendable, Wear Items (Examples: Rubber & plastic parts, hydraulic hoses, belts, tires, cables, blades, tines, wedges, teeth, tips, chains, pins, brushes, filters, etc.) and cracked hydraulic pumps, bent or broken cylinder rods are not covered under this warranty. Warranty does not cover items that have been modified, damaged by abuse or usage not in accordance with design or maintenance.

Betst Products, Inc. obligation under this warranty is to repair or replace defective product upon approval by; Betst Products, Inc., 83371 Melton Rd. N., Creswell OR 97426 that Warranty Claim is Valid. Product shall be returned upon request of Betst Products, Inc. Transportation charges to be prepaid by buyer. **Gasoline or diesel engines used to power Pow'R'Kraft products are covered by the warranty of the appropriate engine manufacture and Purchaser must look to the engine manufacture for all issues relating to engine operation.**

***Betst Products, Inc. assumes no responsibility for outside labor.***

PERMISSIBLE BY APPLICABLE LAW, BETST PRODUCTS, LLC. HEREBY DISCLAIMS ALL WARRANTIES OF ANY KIND, EITHER EXPRESS OR IMPLIED, INCLUDING, ANY IMPLIED WARRANTIES WITH RESPECT TO THE PRODUCT PURCHASED, WITHOUT LIMITING THE GENERALITY OF THE FOREGOING, BETST PRODUCTS, LLC. HEREBY EXPRESSLY DISCLAIMS ALL LIABILITY FOR PRODUCT DEFECT OR FAILURE, CLAIMS THAT ARE DUE TO NORMAL WEAR, PRODUCT MISUSE, ABUSE, PRODUCT MODIFICATION, IMPROPER PRODUCT SELECTION, NON-COMPLIANCE WITH ANY CODES, OR MISAPPROPRIATION. • BETST PRODUCTS, LLC. MAKES NO WARRANTIES TO THOSE DEFINED AS "CONSUMERS" IN THE MAGNUSON-MOSS WARRANTY-FEDERAL TRADE COMMISSION IMPROVEMENTS ACT. THE FOREGOING EXCLUSIONS OF IMPLIED WARRANTIES DO NOT APPLY TO THE EXTENT PROHIBITED BY LAW. PLEASE REFER TO YOUR LOCAL LAWS FOR ANY SUCH PROHIBITIONS

THERE SHALL BE NO LIABILITY FOR PRODUCT LIABILITY OR LIABILITY ON THE PART OF BETST PRODUCTS, LLC. FOR ANY GENERAL, SPECIAL OR CONSEQUENTIAL DAMAGES ARISING OUT OF THE SALE OR USE OF ANY PRODUCTS SOLD BY BETST PRODUCTS, LLC OR AN AGENT THEREOF. BETST PRODUCTS, LLC. MAKES NO WARRANTIES, EXPRESS OR IMPLIED, (INCLUDING, BUT NOT LIMITED TO, ANY WARRANTY OF MERCHANTABILITY OR FITNESS OF THE PRODUCTS FOR ANY PURPOSE) WITH RESPECT TO THE PRODUCTS COVERED BY THIS AGREEMENT EXCEPT AS IN THIS PARAGRAPH OTHERWISE EXPRESSLY PROVIDED.

THIS IS THE SOLE AND ONLY WARRANTY OF POW'R'KRAFT PRODUCTS. NO OTHER WARRANTY IS APPLICABLE, EITHER EXPRESSED OR IMPLIED, IN FACT OR BY LAW,

This warranty shall not be interpreted to render Betst Products, Inc., or any authorized agent liable for injury or damages of any kind or nature, direct, consequential, or contingent, to person or property.

The sole and only remedy in regard to any defective products shall be the repair or replacement thereof as herein provided. Betst Products, Inc., agent(s) of Betst Products, Inc. shall not be liable for any consequential, special, incidental or punitive damages resulting from or caused by any such defects.

Betst Products, Inc. reserves the right to make improvements in design or changes in specifications at any time, without incurring any obligations to owners of units previously sold.

No one is authorized to alter, modify, or enlarge this warranty nor the exclusions, limitations, and reservation thereof.



**WARRANTY VOID IF REGISTRATION IS NOT RECEIVED OR RECORDED ONLINE WITHIN 30 DAYS OF PURCHASE DATE OR SHIP DATE, WHICHEVER IS LATER.**

## REGISTRATION

Item \_\_\_\_\_ Model # \_\_\_\_\_ Purchase Date \_\_\_\_ / \_\_\_\_ / \_\_\_\_

Purchased From: \_\_\_\_\_ Gift ☐ Inv#/Order# \_\_\_\_\_

Owner Name: \_\_\_\_\_ Serial # (if Applicable) \_\_\_\_\_

Owner Address: \_\_\_\_\_

City: \_\_\_\_\_ County: \_\_\_\_\_ ST: \_\_\_\_\_ Zip Code: \_\_\_\_\_

Phone: \_\_\_\_\_ Email: \_\_\_\_\_

### Acceptance of responsibility:

I (Purchaser) have read operators manual and Limited Warranty or someone has read/and explained all instructions to me. I understand this warranty does not cover any labor and that all disputes will be settled by binding arbitration. Binding arbitration is conducted by the Better Business Bureau (BBB) located at 4004 SW Kruse Way Place Ste 375 Lake Oswego OR 97035 or the current BBB location closest to Betst Products, I acknowledge my Limited Warranty is void if any attempt to repair or replace defective parts has been made by unauthorized personnel. I acknowledge receipt of my Operators Manual and have read the Safe Operation Section. I acknowledge understanding maintenance and safe operation requirements, item specifications, operation, controls, and storage requirements. **I understand that I alone am responsible for proper maintenance, care and safe operation of this Pow'R'kraft item.**

\_\_\_\_ Received and read Operators Manual, Specifically Safe Operation Section. \_\_\_\_ Specifications Accepted

\_\_\_\_ Controls Understood \_\_\_\_ Maintenance Requirements Understood \_\_\_\_ Proper Storage Understood

I (Purchaser) agree that persons not familiar with the operation of this item should not be allowed to use it. Children especially should not operate or be near Power Products when in use. ANYONE OPERATING POW'R'KRAFT PRODUCTS SHOULD HAVE READ OPERATIONS MANUALS AND SAFETY MANUALS.

**Owners Signature:** x \_\_\_\_\_ Date: \_\_\_\_ / \_\_\_\_ / \_\_\_\_

**You must sign this warranty and mail or fax copy to Betst Products, 83371 Melton Rd N.#3, Creswell OR 97426. If you prefer you may complete your registration on line at [www.PowRkraft.com](http://www.PowRkraft.com). This warranty is not effective unless the Purchaser completes Registration and Warranty Form within 30 days of purchase date or ship date whichever is later.**

**Fax to 1-904-216-2059**

NOTE: We may refuse warranty of any kind unless Betst Product, Ilc., receives a completed, legible and signed warranty registration. It is the responsibility of the purchaser to assure that registration document is received by Betst Products, Ilc..

**Fax to 1-904-216-2059**

# 2 YEAR EXTENDED WARRANTY & REGISTRATION

**Pow'R'Kraft**

**Branded Products**

## 2 YEAR EXTENDED WARRANTY

2 Year Extended Warranty amends to original Recorded Warranty Registration the time period of described coverage. Extended Warranty does not apply to Consumable and Expendable Items as described in Product Warranty Registration.

This Amendment does not affect any other part of recorded Warranty Registration or Policy.

No one is authorized to alter, modify, or enlarge this Amendment to original recorded warranty registration.

### EXTENDED REGISTRATION & PAYMENT MUST BE RECEIVED WITHIN 30 DAYS OF PURCHASE DATE

#### ***EXTENDED WARRANTY REGISTRATION***

Product & Model # : \_\_\_\_\_

Serial #: \_\_\_\_\_ if applicable

Owner Name: \_\_\_\_\_

Sellers Invoice/Order # \_\_\_\_\_

#### **Acceptance of responsibility:**

I (Purchaser) have Read and understand the Extended Warranty or someone has read/and explained all the above to me. I understand this extended warranty does not cover any labor. I have filed my Original Warranty Registration and fully understand my requirements. **I understand that I alone am responsible for proper maintenance, care and safe operation of this tractor implement.**

I (purchaser) also understand that persons not familiar with the operation of this equipment should not be allowed to use it. Children especially should not operate or be near equipment. ANYONE OPERATING EQUIPMENT SHOULD HAVE READ ALL EQUIPMENT OPERATIONS MANUALS AND SAFETY MANUALS..

**Owners Signature:** x \_\_\_\_\_

**Date:** \_\_\_\_\_

**You must sign this extended warranty and Fax to 1-305-397-1780 or mail copy to Betst Products, 83371 Melton Rd N.#3, Creswell OR 97426. This extended warranty is not effective unless the Purchaser faxes or mails this Registration Form within 30 days of purchase. NOTE: The Manufacturer may refuse warranty of any kind unless Betst Products receives a completed, legible and signed extended warranty registration. It is the responsibility of the purchaser to assure that this registration document is received by Betst Products.**

**To determine Payment for Extended Warranty Call: 1-877-876-7895 or visit [www.PowRkraft.com](http://www.PowRkraft.com)**