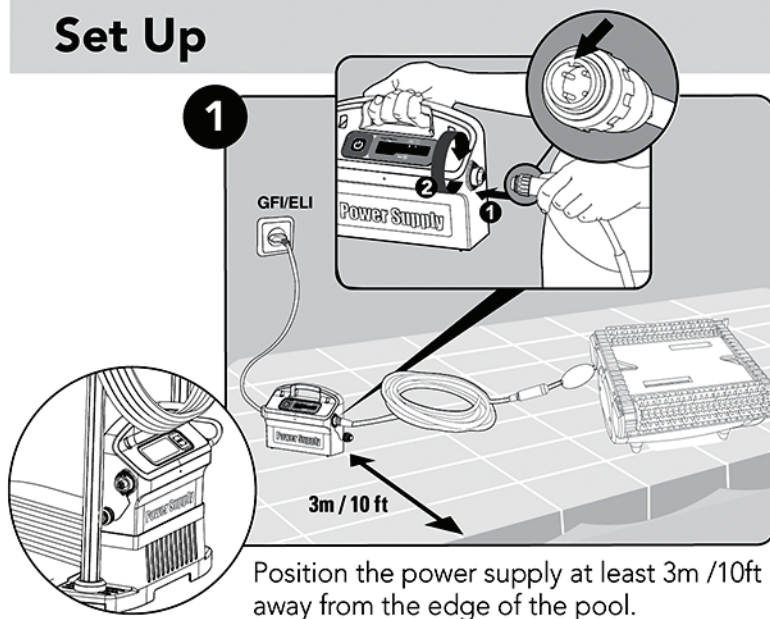




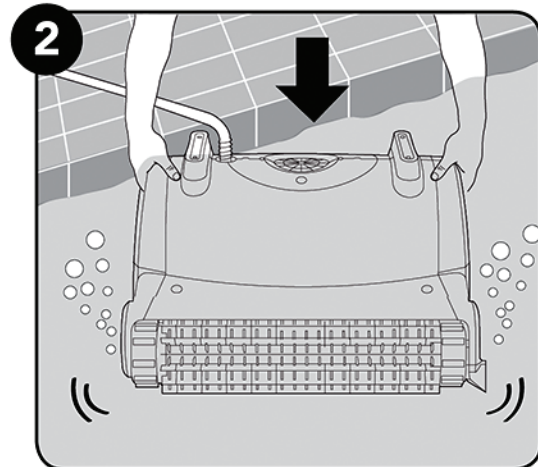
Robot operation

Set Up

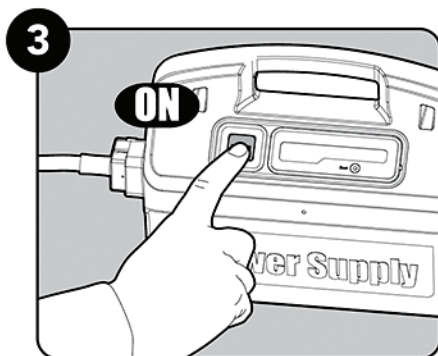


Position the power supply at least 3m /10ft away from the edge of the pool.

Into the pool

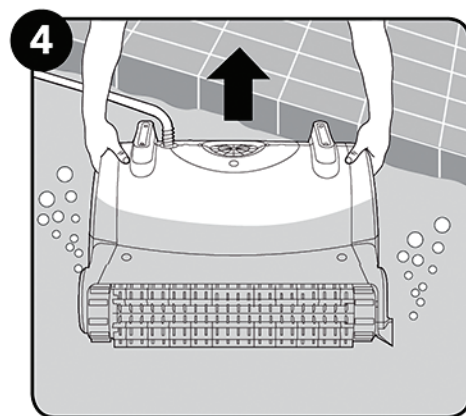


Operation

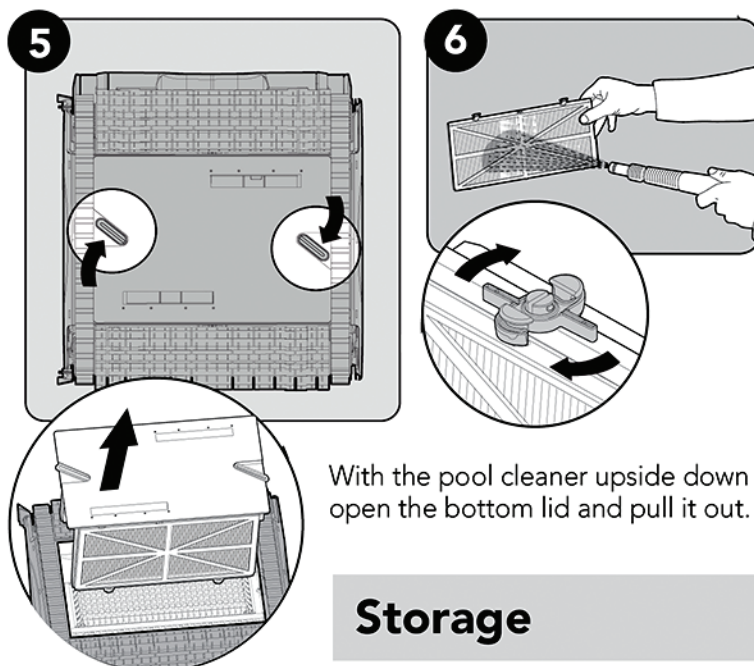


The robot will now begin working for a complete cleaning cycle. At the end of the cycle, it will automatically switch itself off.

Out of the pool



Cleaning the filter



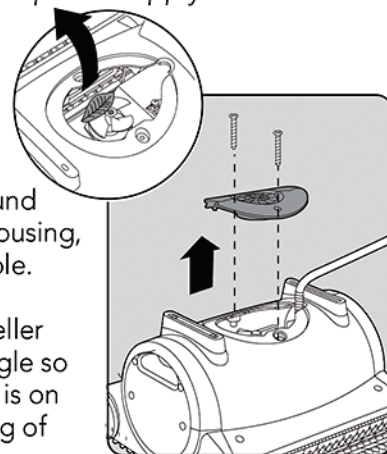
With the pool cleaner upside down open the bottom lid and pull it out.

Periodical maintenance

⚠ Unplug the power supply before servicing

7 Dismantle the impeller cover and clean around the impeller housing, then reassemble.

Place the impeller cover at an angle so that the notch is on the second ring of the spring.



Storage

8 Coil the cable and store in a cool, dry place on the Caddy. Do NOT store the robot where it will be exposed to direct sunlight, excessive heat or to frost.