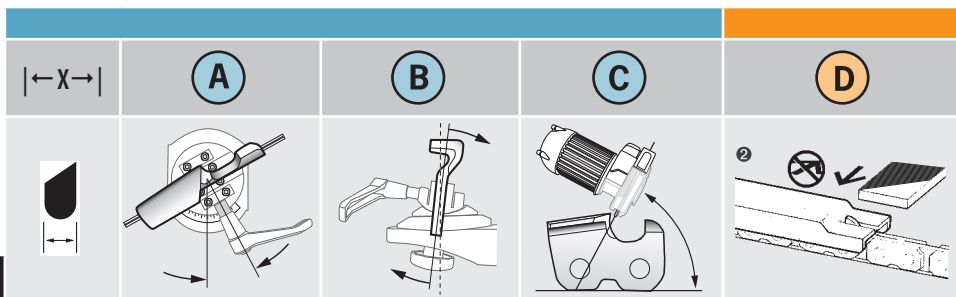


GRINDING ANGLES



OREGON



	←X→	A	B	C	D
1/4"					
25AP	1/8"	30°	10°	55°	.025"
3/8"					
90SG	1/8"	30°	0°	55°	.025"
91P, 91PX, 91VG	1/8"	30°	0°	55°	.025"
90S	1/8"	30°	0°	55°	.025"
91VX, 91VXL, M91VX	1/8"	30°	0°	55°	.025"
325"					
33, 34, 35SL	1/8"	25°	10°	55°	.025"
95VPX	3/16"	30°	10°	55°	.025"
20, 21, 22BPX	3/16"	30°	10°	55°	.025"
20, 21, 22LPX, M20, M21, M22LPX	3/16"	25°	10°	55°	.025"
95R	3/16"	10°	10°	50°	.025"
3/8"					
72, 73, 75V	3/16"	25°	10°	55°	.025"
72, 75CJ, CK, CL, CJX, CKX, CLX	-	15°	45°	-	.025"
72AP, 72, 73, 75DP	3/16"	35°	10°	55°	.025"
72, 73, 75JGX, JPX, LGX, LPX	3/16"	25°	10°	55°	.025"
M72, M73, M75LPX	3/16"	10°	10°	50°	.025"
72, 73, 75RD	3/16"	10°	10°	50°	.025"
404"					
27X, 27AX	3/16"	30°	10°	55°	.030"
27R, RA	3/16"	10°	10°	50°	.030"
58CJ, CL, 59CJ, CK, CL	-	15°	45°	-	.025"
58, 59J, L	3/16"	25°	10°	55°	.025"
68LX, JX	3/16"	25°	10°	55°	.030"
68CJ, CL	-	15°	45°	-	.030"
404"					
16H, 18H, 18HX, 18HJX	3/16"	35°	10°	60°	.050"
3/4"					
11BC	5/16"	35°	0°	60°	.060"
11H	5/16"	35°	0°	50°	.070" ④