



Electric Log Splitter

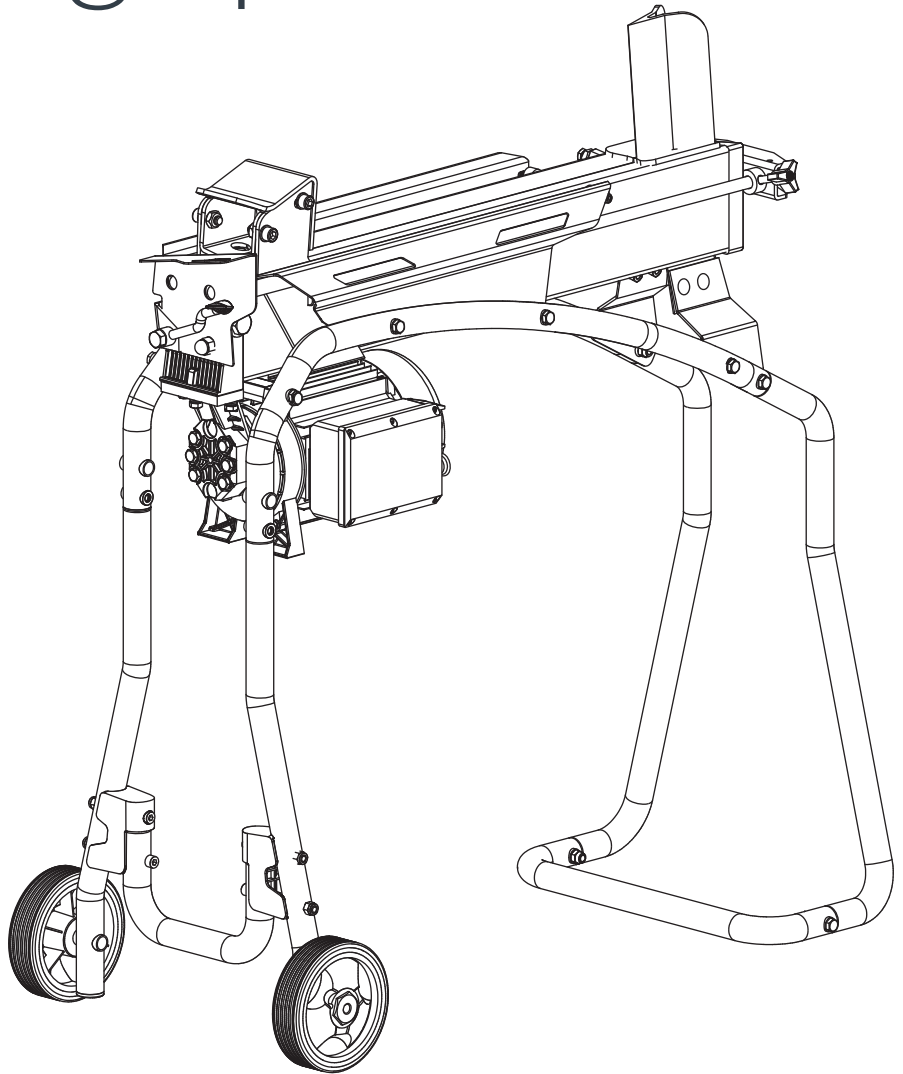
Operator's Manual

MODEL NUMBER
YS0552

SERIAL NUMBER

PURCHASE DATE

Both model number and serial number may be found on the main label. You should record both of them in a safe place for future use.



FOR YOUR SAFETY

READ AND UNDERSTAND THE ENTIRE MANUAL BEFORE OPERATING MACHINE

Your new YARDMAX™ electric log splitter offers quality construction, and is easy and safe to operate. With proper use and care, it is designed to give you many years of dependable service.

Prepare to experience the durability to take on any job – with the ease, portability, and convenience of clean, electric splitting!

Discover the YARDMAX Advantage

At YARDMAX, we understand that land ownership definitely has its privileges, but it also comes with a great deal of responsibility. When duty calls and you need to respond, will you have what it takes to tame the great outdoors?

When looking for outdoor power equipment (OPE) to get the job done right, at the right price, YARDMAX delivers the perfect combination of performance and practicality. YARDMAX has a solution that’s right for you.

MAX Performance, MAX Value, MAX Support – that’s YARDMAX

- ✓ Backed by decades of proven manufacturing expertise
- ✓ Enhanced design features come standard
- ✓ Engineered for the best user experience
- ✓ Quality metal parts are used instead of plastic
- ✓ A robust warranty supports all products
- ✓ Budget-friendly prices make it practical



Up for the job? YARDMAX is.

TABLE OF CONTENTS

Introduction	1
Specifications	2
Symbols	3
Safety	3
Contents Supplied	5
Operation	5
Assembly	6
Know Your Machine	7

Freeing a Jammed Log	9
Replacing Hydraulic Oil	10
Sharpening the Wedge	10
Troubleshooting	11
Wiring Diagram	11
Plumbing Diagram	11
Parts Diagram	12
Parts List	13



Recycle unwanted materials. All tools, hoses, and packaging should be disposed of in an environmentally friendly way.

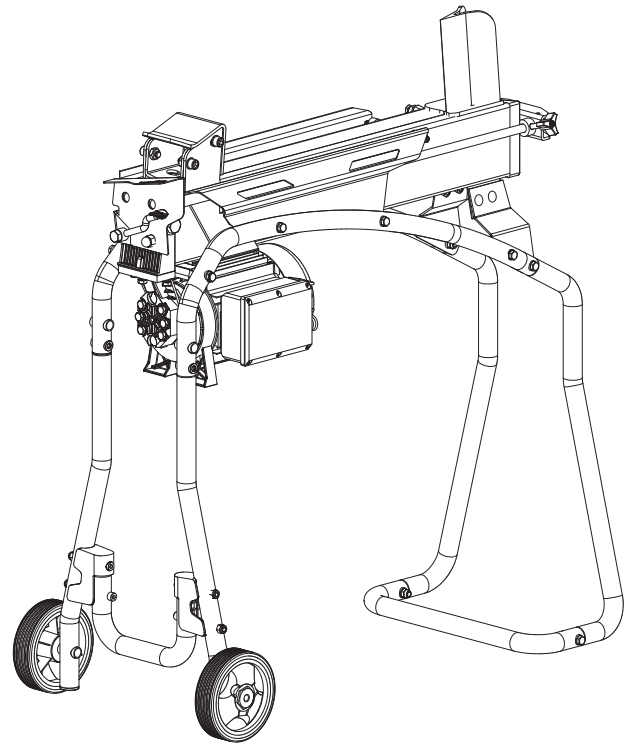
Your new Log Splitter will more than satisfy your expectations. It has been manufactured under stringent quality standards to meet superior performance criteria. You will find it easy and safe to operate, and with proper care, it will give you many years of dependable service.



Carefully read through this entire operator's manual before using your new Log Splitter. Pay attention to all cautions and warnings.

SUPPORT

Have questions about your YARDMAX equipment? Call us at 844-YARDMAX, email us at support@yardmax.com, or contact us via your favorite social media site.



SPECIFICATIONS

Item No.		YSO552
Motor		120V~ 60Hz 15A, 1.75HP
Log Capacity	Diameter	10 in
	Length	20.5 in
Splitting Force		5 ton
Hydraulic Pressure		3,000 psi
Hydraulic Oil Capacity		3.7 qt
Overall Size	Length	37.4 in
	Width	18.1 in
	Height	39.5 in
Weight		108 lbs

SYMBOLS

The rating plate on your machine may show symbols. These represent important information about the product or instructions on its use.



Read these instructions carefully.



Wear eye protection.
Wear hearing protection.



Wear protective gloves.



Wear safety footwear.



Do not remove or tamper with the protection and safety devices.



Properly dispose of oil!



Risk of injury.



Do not reach into the machine without protection!



Warning! Stay clear of moving parts!



Disconnect the main plug prior to the repair, cleaning, and maintenance of the splitter!



Keep children and bystanders off and away.

SAFETY

KNOW YOUR LOG SPLITTER

Read this manual and all labels to understand your YARDMAX log splitter and its limitations and potential hazards.

DRUGS, ALCOHOL, AND MEDICATION

Do not operate your log splitter while under the influence of drugs, alcohol, or any medication that could affect your ability to use it properly.

AVOID DANGEROUS CONDITIONS

Secure your log splitter on level ground. Keep your work area clean and well lighted. Cluttered areas may cause injuries. Do not use your log splitter in wet or damp areas or expose it to rain. Do not use it in areas where fumes from paint, solvents, or flammable liquids pose a potential hazard.

INSPECT YOUR LOG SPLITTER

Inspect your log splitter before turning it on. Keep guards in place and in working order. Regularly check to see that keys and adjusting wrenches are removed from the tool area before turning it on. Replace damaged, missing, or failed parts before using it.

DRESS PROPERLY

Do not wear loose clothing, gloves, or jewelry (rings, watches) that can be caught in moving parts. Wear protective nonconductive gloves and nonskid footwear. Pull long hair back or wear a hat to prevent hair from getting caught in the machine.

PROTECT YOUR EYES

Always wear safety glasses. Log splitters can throw foreign objects into the eyes, causing permanent eye damage. Everyday glasses do not have impact-resistant lenses and should not replace safety glasses. Z87 rated glasses are recommended.

PROTECT YOUR BODY

Always stand behind the log splitter and be alert. Logs can become a projectile under force of the ram in any direction.

KEEP VISITORS AND CHILDREN AWAY

Only one person at a time should operate the log splitter. Bystanders should keep a safe distance from the work area, standing behind the operator. Never have another person help you free a jammed log.

EXTENSION CORDS

Improper use of extension cords can result in overheating. Your extension cord should be no longer than 30 feet and a minimum of 12 gauge with a 3-prong grounded plug.

AVOID ELECTRICAL SHOCK

Never open the pushbutton box on the motor. For any service please contact YARDMAX or an authorized service center. Make sure your fingers do not touch the plug's metal prongs when plugging or unplugging the log splitter.



WARNING! Stay of clear of all moving parts!

INSPECT YOUR LOG

Make sure there are no nails or foreign objects in logs to be split. The ends of the logs must be cut square. Branches must be cut off flush with the trunk. Knots can make a log split differently and could cause the log to become a projectile.

DON'T OVERREACH

Do not operate your log splitter on a slippery surface. Never stand on the log splitter.

AVOID INJURY FROM ACCIDENTS

Always pay attention to the movement of the log ram. Do not load the log until the log ram has stopped.

PROTECT YOUR HANDS

Keep your hands out of the way of all moving parts. Keep your hands away from splits and cracks that open in the log; they may close suddenly and crush or cut off your hands. Do not remove jammed logs with your hands.

DO NOT FORCE TOOL

Your log splitter will do a better and safer job at its design rate. Never try to split logs larger than those indicated in the specifications table. This could be dangerous and may damage the machine. Do not use your log splitter for anything other than splitting logs.

NEVER LEAVE TOOL UNATTENDED

Do not leave your log splitter until it has come to a complete stop.

DISCONNECT POWER

Unplug your log splitter when not in use and before making adjustments, changing parts, cleaning, or servicing. Consult the technical manual before servicing.

PROTECT THE ENVIRONMENT

Take used oil to an authorized collection point. Do not pour into drains, soil, or water.

MAINTAIN YOUR LOG SPLITTER WITH CARE

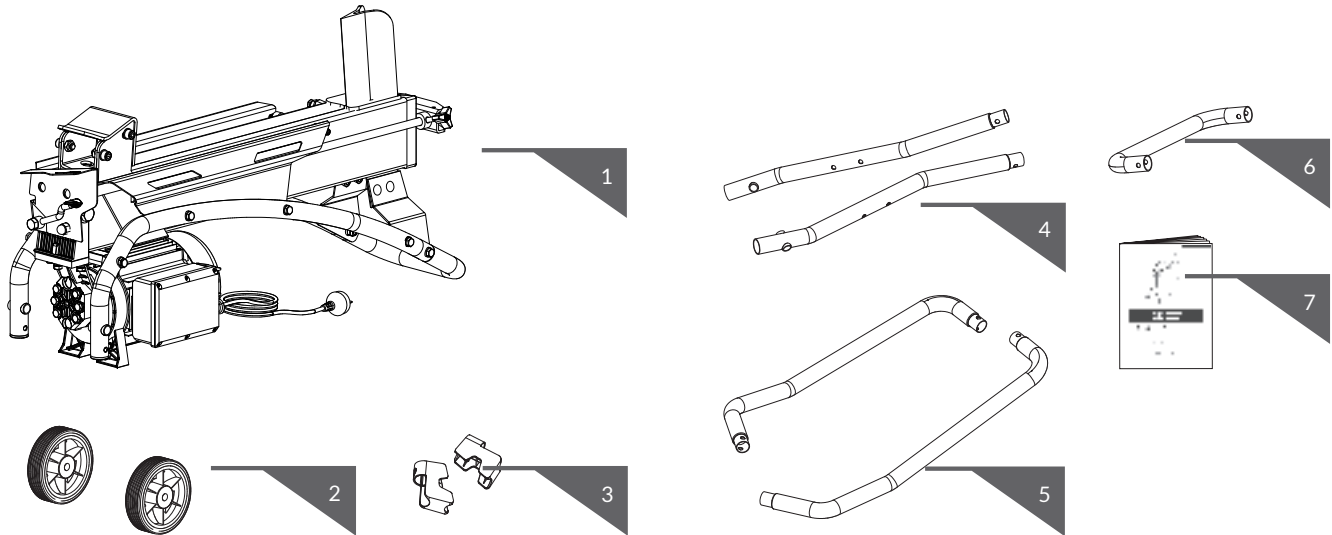
Keep your log splitter and its parts clean.

CHILDPROOF YOUR WORKSHOP

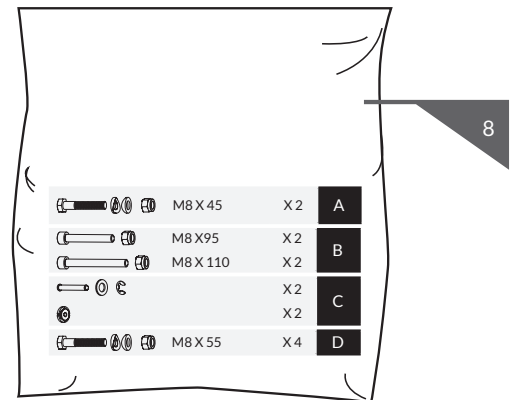
Store your log splitter away from children and others not qualified to use it.

CONTENTS SUPPLIED

Your YARDMAX log splitter comes partially assembled and contains the following:



1. Log splitter frame, including u-shaped handle
2. Wheel (1 pair)
3. Support brackets (1 pair)
4. Rear support legs (1 pair)
5. Front support legs (1 pair)
6. Front support stand — connecting pipe
7. Operator's manual and Engine manual
8. Hardware bag



OPERATION

OPERATING CONDITIONS

Your YARDMAX log splitter is designed to operate in temperatures between 40°F and 100°F. The surrounding humidity should be less than 50% at 100°F. It can be stored or transported in temperatures between -10°F and 130°F.

ELECTRICAL REQUIREMENTS

Confirm that you have a US Standard, 3 pin grounded, Type B 15 AMP (NEMA 5-15).

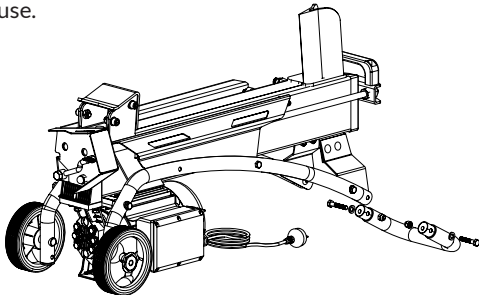
Check that the electric circuit is grounded, adequately protected, and that it corresponds with the power, voltage, and frequency of the motor.

ASSEMBLY

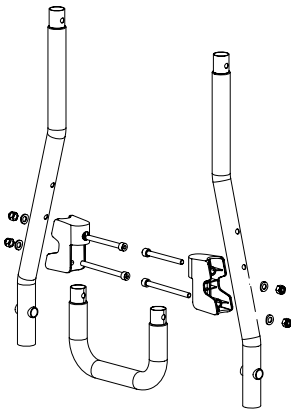
RECOMMENDED TOOLS



To assemble your YARDMAX log splitter, you will need a 6mm hex hand socket or allen wrench, 13mm wrench, and pliers.

1. Remove the two 55mm bolts, arc washers, and nuts from the u-shaped handle on the log splitter frame and set aside for later use.

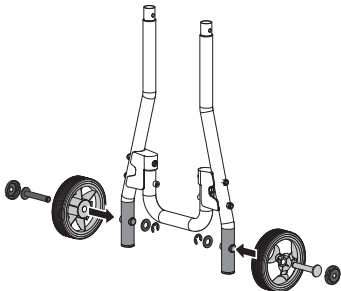




2. Line up the holes in the rear support legs with the holes in the gray support brackets and u-shaped handle. From the inside, insert the 95mm bolts through the top holes and the 110mm bolts through the bottom holes, then secure with arc washers and nuts.



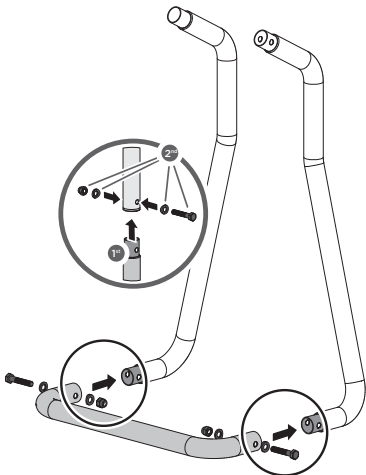
	M8 X 95	X 2	B
	M8 X 110	X 2	

3. Insert the axles through the wheels and attach the wheel covers. Insert the wheels and axles into the holes at the base of the rear leg assembly. Use tongue and groove pliers to attach the C-clip over the end of the axle.

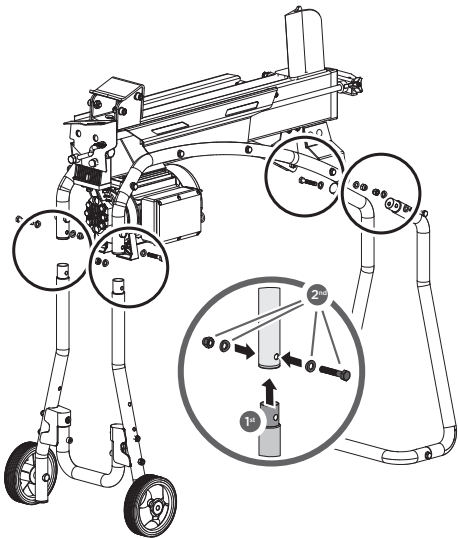



		X 2	C
		X 2	

4. Insert the bottom ends of the front support legs into the connecting pipe and line up the holes. Insert 55mm bolts each with an arc washer through the outside holes, then secure with arc washers and nuts.



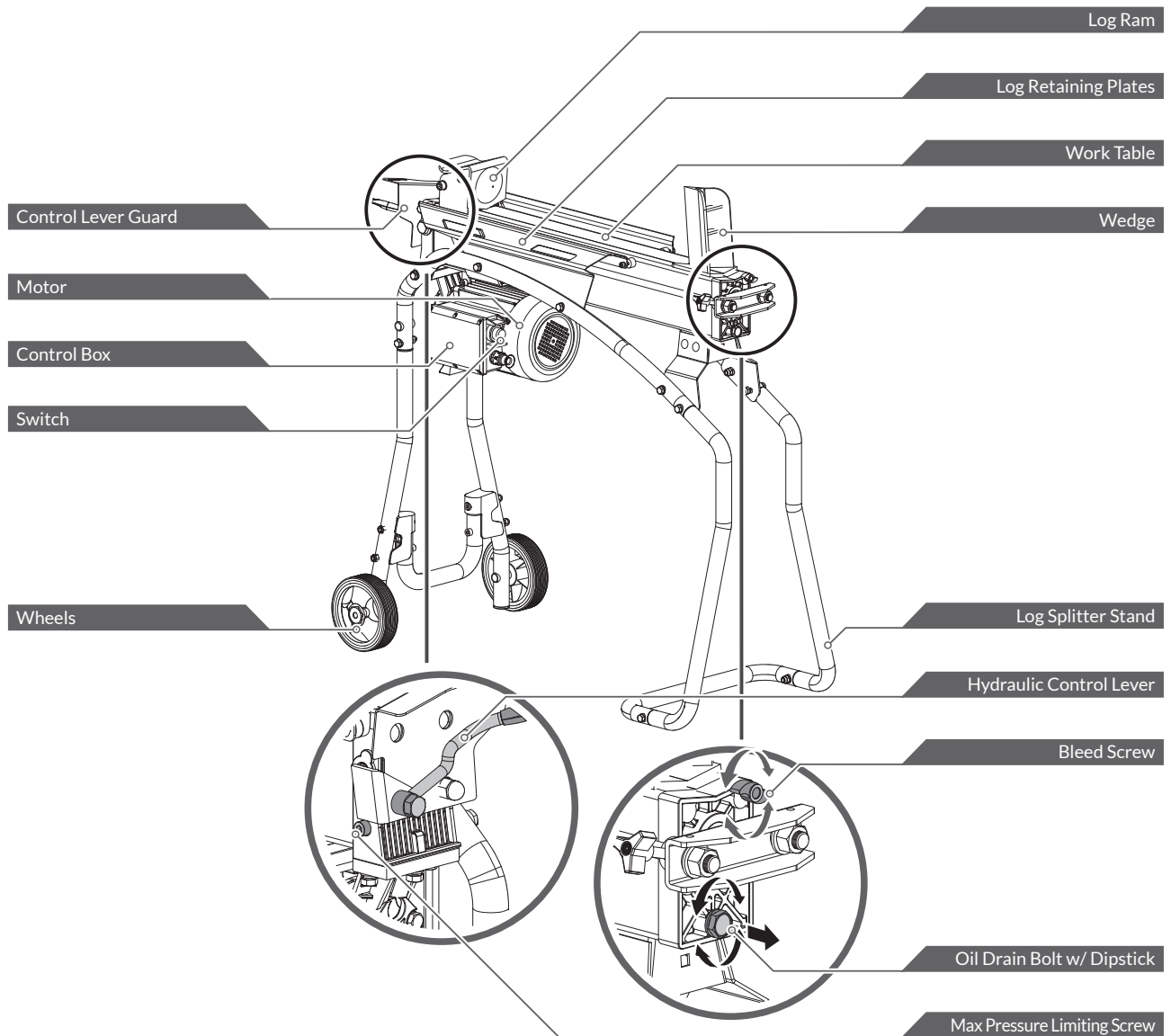
5. Insert the up end of the support legs into the support frame tube and line up the holes, then secure with 55mm bolts, arc washers, and nuts.



	M8 X 55	X 4	D
--	---------	-----	---

KNOW YOUR MACHINE

FEATURES AND CONTROLS



BLEED SCREW

- » Before operating your log splitter, the bleed screw should be loosened until air can go in and out of the oil tank smoothly.
- » Air flow through the bleed screw hole should be detectable when the log splitter is in use.
- » Before moving the log splitter, make sure the bleed screw is tightened to avoid oil leakage.



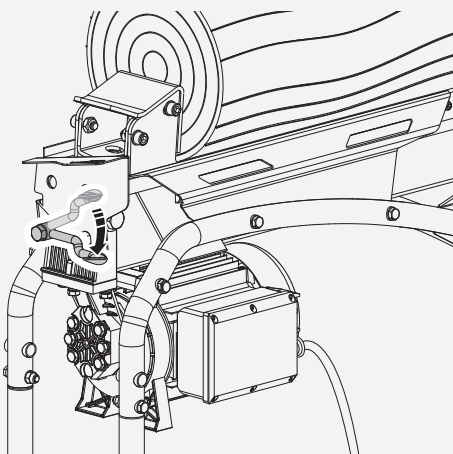
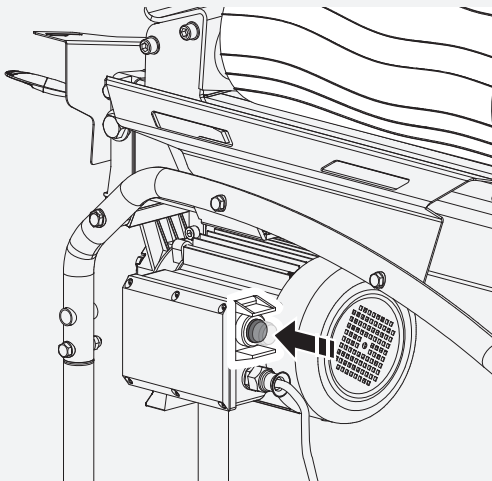
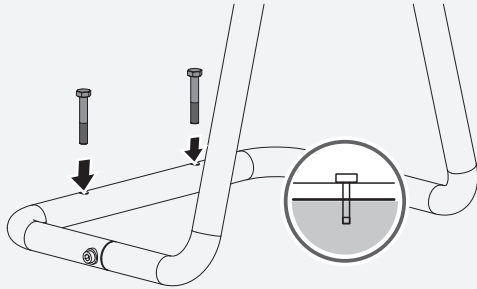
Failure to loosen the bleed screw will keep the sealed air in the hydraulic system compressed. Continuous air compression and decompression will blow out the seals of the hydraulic system and cause permanent damage to the log splitter.

MAX PRESSURE LIMITING SCREW

- » Max pressure was preset at the factory by a qualified mechanic using professional tools.
- » Unauthorized resetting will prevent the hydraulic pump from providing enough splitting pressure or **RESULT IN SERIOUS INJURY AS WELL AS DAMAGE TO THE MACHINE.**



Do not adjust the max pressure limiting screw!



LOG SPLITTER OPERATION

To secure your YARDMAX log splitter, use two bolts or stakes on level ground. Due to varying ground surfaces, these are not included. Choose the right type of bolt or stake for your surface type or call us for a recommendation.

For your safety, your log splitter is equipped with a “ZHB” control system that requires both hands of the operator. The left hand controls the hydraulic control lever while the right hand controls the pushbutton switch. The log splitter will stop if the lever or pushbutton are released. Only after the lever and pushbutton are released will the log ram return to its starting position.

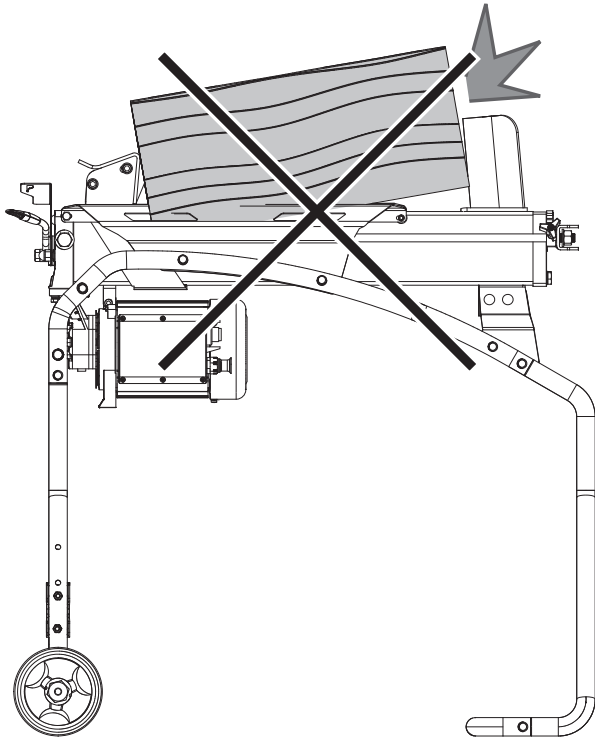
This trigger-type lock-out device helps prevent accidental pushdown of the hydraulic control lever. To operate the hydraulic control lever, draw the trigger backward with the index finger before pushing it forward.



If the log does not begin to split after 5 seconds of operation, release both controls. The motor or hydraulic fluid may overheat and damage your log splitter.

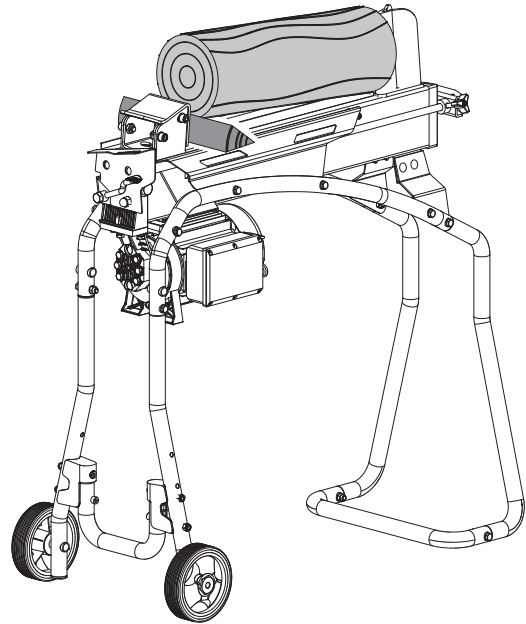
For extremely hard wood, rotate your log 90° to see whether it can be split in a different direction. If the log cannot be split, then its hardness exceeds the machine's capacity. Please check the degree mark and make sure it's in the proper place.

- » When loading a log, place hands on the sides of the log, not the ends. Make sure logs will not twist, rock, or slip while being split.

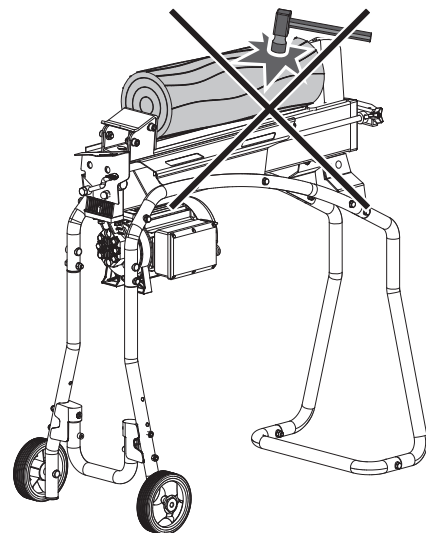


Do not split logs on the upper part of the blade. This could break the blade or damage the machine.

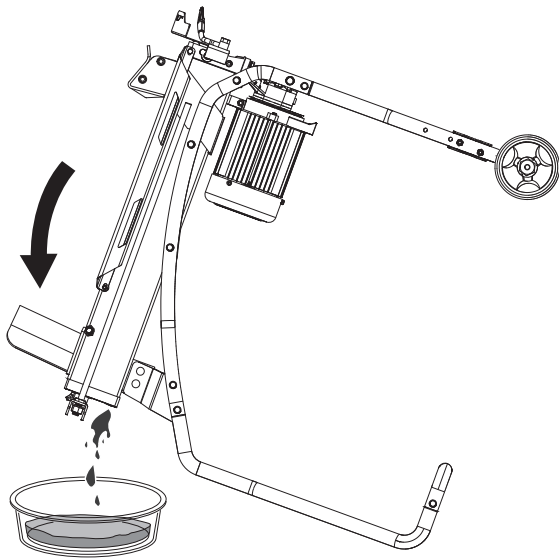
FREEING A JAMMED LOG



- Release both controls.
- After the log ram moves back to its starting position and completely stops, insert a wood wedge under the jammed log.
- Start the log splitter to push the wood wedge completely under the jammed log.
- Repeat above procedure with sharper-sloped wood wedge until the log is completely freed.
- Never try to knock a jammed log off the splitter with your hand or another object. This could damage the tool or cause the log to fly up and hit someone.



REPLACING HYDRAULIC OIL

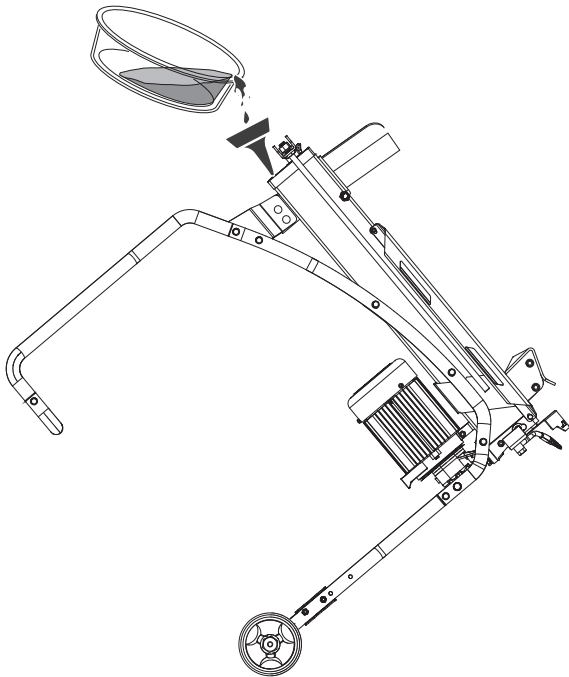


- Tip the log splitter so the motor end is higher than the oil drain plug, and drain oil over a 1- gallon container.
- Tip the log splitter so the oil drain plug is higher than the motor and refill with 3.7 quarts of fresh hydraulic oil.
- Clean the surface of the dipstick and put it back in the oil tank while keeping the log splitter vertical.
- Make sure the level of the refilled oil is between the two grooves on the dipstick.
- Clean the oil drain bolt with dipstick before screwing it back in. Tighten it to avoid leakage before setting the log splitter down.

Periodically check oil level to ensure it is between the two grooves on the dipstick. Refill with oil if it becomes low.

The following hydraulic oils or equivalents are recommended for your log splitter's hydraulic transmission system:

- SHELL Tellus 22
- MOBIL DTE 11
- ARAL Vitam GF 22
- BP Energol HLP-HM 22



Replace the hydraulic oil in your YARDMAX log splitter after every 150 hours of use. Follow these steps to replace it:

- Make sure all moving parts stop and the log splitter is unplugged.
- Unscrew the oil drain bolt with dipstick to remove it.

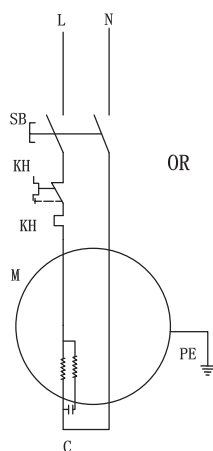
SHARPENING THE WEDGE

Over time your YARDMAX log splitter wedge will dull. If you notice decreased performance, we recommend sharpening the wedge using a fine-toothed file, smoothing any burrs or crushed areas along the cutting edge. For questions about sharpening the wedge, call us at 844-YARDMAX.

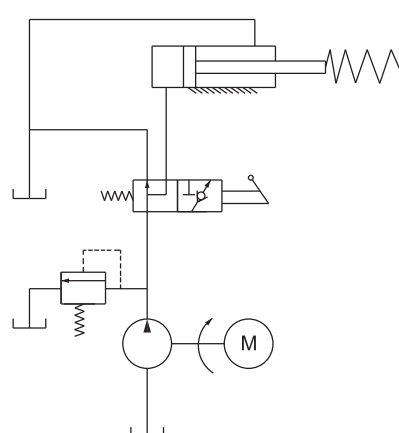
TROUBLESHOOTING

Problem	Cause	Remedy
Fails to split logs.	<ol style="list-style-type: none"> 1. Log is improperly positioned. 2. The sizes or hardness of the log exceeds the capacity of the machine. 3. Wedge cutting edge is dull. 4. Oil leaks. 5. Adjustment was made on max pressure limiting screw. 	<ol style="list-style-type: none"> 1. Refer to Log Splitter Operation section of this manual for proper log loading. 2. Reduce the log sizes before splitting it on the log splitter. 3. Refer to Sharpening the Wedge section to sharpen the cutting edge. 4. Locate leak(s) and contact the dealer. 5. Contact YARDMAX.
Log ram moves inconsistently, making unfamiliar noises or vibrations.	Lack of hydraulic oil and excessive air in the hydraulic system.	<p>Check oil level for possible oil refilling.</p> <p>Contact YARDMAX or authorized service center.</p>
Oil leaks around stroke limiter or from other points.	<ol style="list-style-type: none"> 1. Air sealed in hydraulic system while operating. 2. Bleed screw is not tightened before moving the log splitter. 3. Oil drain bolt with dipstick is not tight. 4. Hydraulic control valve assembly and/or seal(s) worn. 	<ol style="list-style-type: none"> 1. Loosen bleed screw by 3-4 rotations before operating the log splitter. 2. Tighten the bleed screw before moving the log splitter. 3. Tighten the oil drain bolt with dipstick. 4. Contact YARDMAX or authorized service center.
Ram moves slowly and stops prior to the end.	Log splitter may not be level.	Ensure the log splitter is on a level surface.

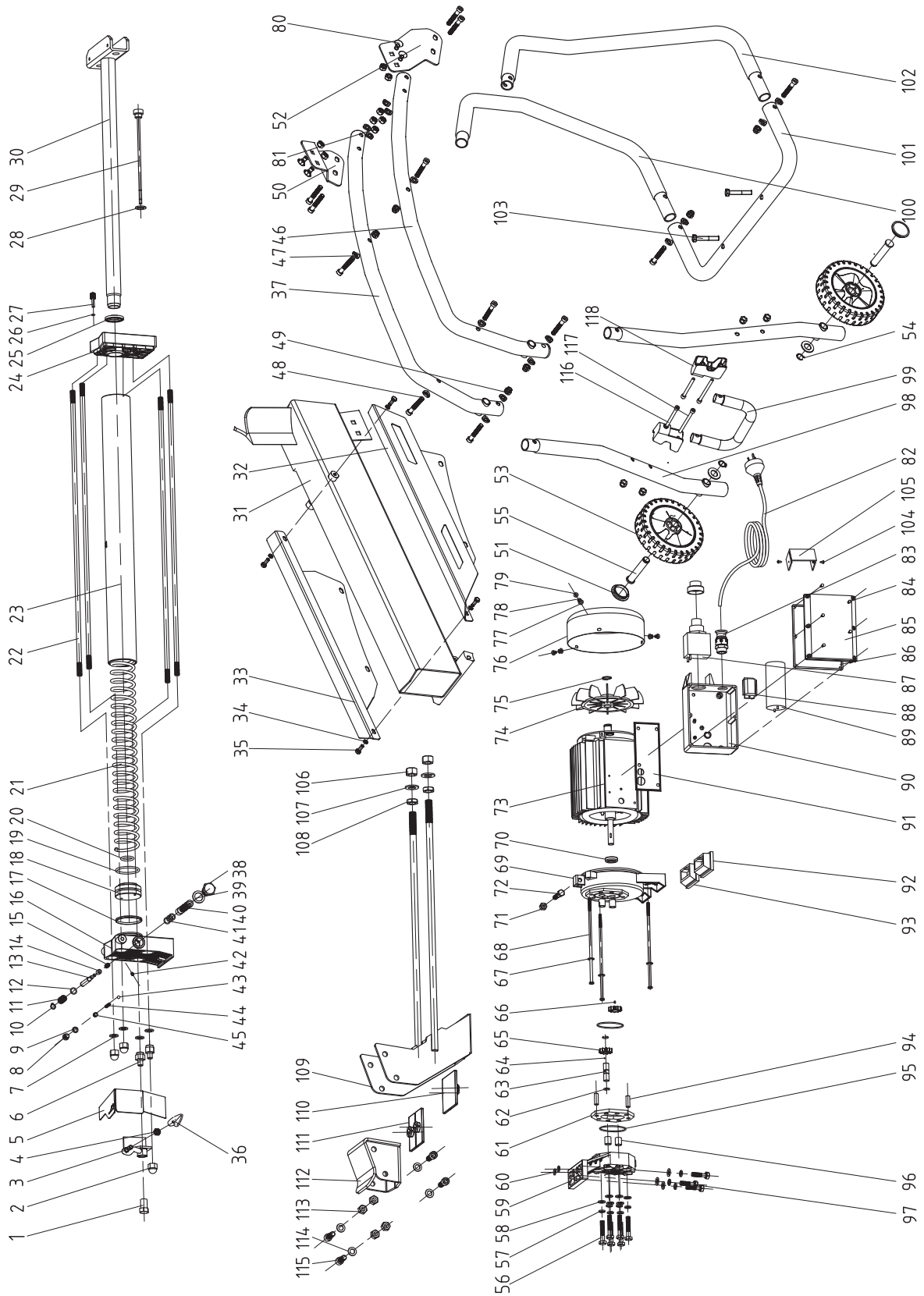
WIRING DIAGRAM



PLUMBING DIAGRAM



PARTS DIAGRAM



YS0552 PARTS LIST

No.	Description	QTY.
1	Lever Mount Nut	1
2	Nut Cap M10	3
3	Lever	1
4	Nut M8	1
5	Lever Guard	1
6	Nut	2
7	Copper Gasket 10	4
8	Safty Bolt Screw M8	1
9	O-Ring 5.5x2	1
10	Snap Washer - Shaft 6	1
11	Valve Retract Spring	1
12	O-Ring 6x1.5	1
13	Valve Core Rod	1
14	Sliding Pressure Sensor Sleeve	1
15	Sliding Pressure Sensor Sleeve Spring	1
16	Alumium Cover (Rear)	1
17	O-Ring 50x2.65	1
18	Piston	1
19	Piston Ring 55	1
20	O-Ring 32x3.5	1
21	Compressed Spring	1
22	Stud Bolt	4
23	Hydraulic Cylinder	1
24	Alumium Cover (Front)	1
25	Piston Rod Seal 30	1
26	O-Ring 7x1.9	1
27	Wing Bolt	1
28	Washer Groupware 14	1
29	Dipstick	1
30	Piston Rod	1
31	Frame Tube	1
32	Lead Plank 1 - Left	1
33	Lead Plank 2 - Right	1

No.	Description	QTY.
34	Washer 6	4
35	Screw M6x10	4
36	Lever Knob	1
37	Support Frame 2 - Right	1
38	Nut Plug	1
39	Washer Groupware 16	1
40	Valve Sleeve	1
41	O-Ring 10x2	5
42	Adjusting Screw M5x8	1
43	Steel Ball 6	1
44	Pressure Limited Valve Spring	1
45	Adjusting Screw M8x8	1
46	Support Frame 1 - Left	1
47	Arc Washer 30	18
48	Screw M8x45	12
49	Nut M8	12
50	Support Stand Mounting Bracket 2 - Right	1
51	Wheel Cover	2
52	Support Stand Mounting Bracket 1 - Left	1
53	Wheel	2
54	Circlip 14	2
55	Wheel Shaft	2
56	Bolt M8x55	6
57	Spring Washer 8	9
58	Washer 8	9
59	Gear Pump Cover	1
60	O-Ring 10.6x2.65	2
61	Gear Housing Plate	1
62	Circlip 10	2
63	Gear Shaft	1
64	Steel Ball 2.5	1
65	Gear	2

No.	Description	QTY.
66	Pin 2.5x4	1
67	Flat Washer 5	6
68	Bolt M5x185	3
69	Motor Cover	1
70	Oil Seal FB11x26x7	1
71	Nut M8	1
72	Screw M8x35	1
73	Motor	1
74	Motor Fan	1
75	Circlip 17	1
76	Shroud	1
77	Flat Washer 5	6
78	Spring Washer 5	6
79	Screw M5x10	2
80	Bolt M8x16	4
81	Nut M8	8
82	Cable & Plug	1
83	Strain Relief	1
84	Screw M4x10	11
85	Switch Box-Front Cover	1
86	Airproof Underlay	1
87	Connection Terminal	1
88	Switch	1
89	Capacitor	1
90	Switch Box-Back Cover	1
91	Waterproof Underlay	1
92	Motor Support Left Shoe	1
93	Motor Support Right Shoe	1
94	Pin 8x24	2
95	O-Ring 46.2x1.8	2
96	Sliding Sleeve	4

No.	Description	QTY.
97	Bolt M8x30	3
98	Rear Support Leg	2
99	U-Shaped Handle - Rear Support Assembly	1
100	Front Support Leg - Right	1
101	Connecting Pipe - Front Left Assembly	1
102	Front Support Leg - Left	1
103	Bolt M8x50	2
104	Screw ST2.9X6.5	2
105	Switch Guard Board	1
106	Hexagon Lock Nut M14	2
107	Flat Washer 14	2
108	Hexagon Thin Nut M14	2
109	Log Pusher Connection Weldment	1
110	Plastic Insert 1 - Lower	1
111	Plastic Insert 2 - Upper	1
112	Log Pusher	1
113	Hexagon Lock Nut M10	4
114	Flat Washer 10	5
115	Screw M10x25	4
116	Screw M8x80	2
117	Screw M8x100	2
118	Plastic Connector	2

Tame the Great Outdoors™

